

ROSSINI

Lyric

Cinderella

 **Invesco QQQ**
Season Sponsor

In this issue



Cory Weaver/San Francisco Opera

Ramiro's courtiers arrive with an invitation to the ball, in San Francisco Opera's 2014 production of *Cinderella*. | pp.16-35

6 WELCOME TO YOUR LYRIC

- 8 A letter from the Chair and the General Director
- 10 Board of Directors
- 12 The Ryan Opera Center offers some of the finest training in the world.

16 TONIGHT'S PERFORMANCE

- 19 Title page and cast
- 20 Synopsis
- 24 Opera Notes: The bold vision of designer/director Jean-Pierre Ponnelle
- 28 Artist profiles
- 34 Orchestra and Chorus

36 THANK YOU FOR YOUR SUPPORT

- 38 Bravissimi
- 40 Production sponsors
- 42 Supporting our future—endowments at Lyric
- 44 Ardis Krainik Society
- 48 Corporate partnerships
- 50 Aria Society
- 54 Annual individual and foundation support
- 60 Commemorative gifts
- 61 Artistic roster
- 62 Lyric staff

64 RYAN OPERA CENTER

- 66 Ryan Opera Center alumni around the world
- 66 Program staff

68 BEYOND THE STAGE

- 70 Lyric's Elementary Opera Residencies bring the art form into the city's schools
- 72 People of Lyric: The Manager of the Ryan Opera Center keeps the complex place running smoothly

On the cover: Photo by Cory Weaver, San Francisco Opera

Lyric

Lyric

HOLLY H. GILSON

Senior Director, Communications

DAVID ZIVAN

Program Book Editor

CATHY KIEPURA

Program Book Design

JESSICA M. PEDROZA, PMP

Project Manager

Administrative Offices
20 North Wacker Drive, Suite 860
Chicago, Illinois 60606
lyricopera.org

SAMETZ BLACKSTONE ASSOCIATES

Visual Direction

PMGMA, Inc.

PMGMA, Inc.
340 Anthony Trail
Northbrook, IL 60062
pmgma.com

Gail McGrath
Publisher & President

Sheldon Levin
Finance

Rand Brichta
Arnie Hoffman
Michael Hedge
Account Managers

For advertising information call 847-770-4621.
To see our Advertising Terms and Conditions,
visit our website at pmgma.com.

All contents copyrighted. All rights reserved.
Nothing may be reproduced in any manner
without written permission. © 2023

PMGMA, Inc. is a Woman Owned Business.

**You can view this program on your mobile device
at www.pmgma.com.**

**For the latest information on this
performance, please scan this QR code.**



Lyric

Lyric

At Lyric, you'll be amazed, replenished, and inspired with must-see, must-hear live experiences. Through the timeless power of voice, acting that brings characters to life in triumph and tragedy, the splendor of a great orchestra and chorus—coupled with theater, dance, design, and truly magical stagecraft—Lyric is devoted to immersing audiences in worlds both familiar and unexpected, creating shared experiences that resonate long after the curtain comes down.



Anthony Freud
*General Director,
President & CEO*
Enrique Mazzola
Music Director

Lyric

Welcome to your Lyric

From the Chair and the General Director

What a pleasure it is to welcome you to this performance of one of the classics of the *bel canto* repertoire—in an equally classic and unique production.

With its sparkling wit and unbridled joy, Gioachino Rossini's *Cinderella* has delighted generations of operagoers. Few interpretations of the work could rival that of the original director and designer of our production, Jean-Pierre Ponelle. This great artist passionately believed that fidelity to the score was the key priority of anyone wishing to make opera, and this production, which originally premiered at San Francisco in 1969, represents the innovative visionary at the height of his powers. For more on his career and bold vision, please read the insightful essay starting on page 24.

Our cast brings the eagerly awaited debuts of two dazzling young stars on the international scene. Our heroine, Vasilisa Berzhanskya, is a former member of both the Salzburg Festival's Young Artists program and the ensemble at Deutsche Oper Berlin. This season alone, she will appear there as well as at the Royal Opera House Covent Garden, the Teatro San Carlo in Naples, and in Vienna. She is a mezzo-soprano we'll all be watching in years to come. Her princely romantic interest is the exciting young American tenor Jack Swanson. In recent seasons, he has made auspicious debuts at the Metropolitan Opera and at the Staatsoper Hamburg. He recently made his debut at Houston Grand Opera as Fenton in *Falstaff*.

Fresh from his success in our recent *Daughter of the Regiment*, the legendary Alessandro Corbelli returns to Lyric as Don Magnifico, one of his signature roles. This production marks his 10th role at Lyric. Making her debut is the exciting young conductor Yi-Chen Lin, who in recent seasons has caught the notice of audiences worldwide.

Rounding out the ensemble for this special occasion is, of course, you—our wonderful audience. Your generous support is critical for bringing these talents to our stage. We remain profoundly grateful to you for being part of the Lyric Opera family. Please get ready to laugh—and enjoy the show!



Sylvia Neil

SYLVIA NEIL
Chair



Anthony Freud Obe

ANTHONY FREUD OBE
President, General Director & CEO
The Women's Board Endowed Chair

Lyric

Board of Directors

OFFICERS

The Honorable J.B. Pritzker
The Honorable Brandon Johnson

*Honorary Chairs
of the Board*

Sylvia Neil

Chair of the Board

Edgar D. Jannotta

Allan B. Muchin

Co-Chairs Emeritus

David T. Ormesher

*Co-Chair Emeritus &
Chair of the Executive
Committee*

Anthony Freud

*General Director,
President & CEO
The Women's Board
Endowed Chair*

James L. Alexander

Vice Chair

Enrique Mazzola

Vice Chair

Shirley Welsh Ryan

Vice Chair

Eric S. Smith

Vice Chair

Donna Van Eekeren

Secretary

Dan Grossman

Treasurer

Elizabeth Hurley

Assistant Secretary

Vincente F. Milianti

Assistant Treasurer

LIFE DIRECTORS

Julie Baskes
Gilda R. Buchbinder
Sonia Florian
Ronald J. Gidwitz
Ruth Ann M. Gillis
Howard L. Gottlieb
Dietrich M. Gross
J. Thomas Hurvis
Edgar D. Jannotta
George E. Johnson
Susan Kiphart
Robert W. Lane
Gordon Segal
Robert E. Wood II

DIRECTORS

Katherine A. Abelson⁺
James L. Alexander^{*}
Mrs. James N. Bay
Louise Bernard
Allan E. Bulley, III
John E. Butler⁺
Marion A. Cameron-Gray^{*}
Amy Carbone
Orit Carpenter
Jane Chu^{*}
Richard W. Colburn^{**}
Francesca Cornelli
Vinay Couto
Scott Cozad
Lester Crown⁺
Marsha Cruzan⁺
Laura DeFelice
Dan Draper⁺
Allan Drebin⁺
Charles Droege⁺
Chaz Ebert

Lois Eisen
James E. Fellowes
Matthew A. Fisher
Robert B. Ford
Steven L. Fradkin^{*}
Karen Freeman-Wilson
Anthony Freud^{*}
Sarah Garvey⁺
Ethel C. Gofen
Melvin Gray
Karen Z. Gray-Krehbiel
Maria C. Green⁺
Dan Grossman^{*}
Gary Haase
Ralph Hasbun
Elliot E. Hirsch
Jodi Hochberger Rubenstein
Gregory K. Jones
Stephen A. Kaplan
Vikram Karnani
Neil T. Kawashima
Kip Kelley II
Lori Ann Komisar
Josef Lakonishok^{*}
Jonathan Lewis
Philip Lumpkin
Craig C. Martin^{*}
Samir Mayekar^{*}
Enrique Mazzola^{*}
Robert J. McCullen
Blythe J. McGarvie
Mimi Mitchell
Frank B. Modruson^{**}
Allan B. Muchin^{*}
Linda K. Myers
Jeffrey C. Neal
H. Gael Neeson
Sylvia Neil^{*}

Gregory J. O'Leary^{*}
Sharon F. Oberlander
Olufunmilayo I. Olopade
David T. Ormesher^{*}
William A. Osborn
Anna Paglia
Matthew J. Parr
Jane DiRenzo Pigott^{*}
Tanya Polsky^{*}
Jose Luis Prado
Don M. Randel
Brenda Robinson^{*}
Joseph O. Rubinelli, Jr.^{*}
Richard O. Ryan
Shirley Welsh Ryan^{*}
E. Scott Santi^{*}
Nancy Santi
Christine Schyvinck
Nancy S. Searle
Marsha Serlin
Brenda M. Shapiro^{*}
Richard W. Shepro^{*}
Eric S. Smith^{*}
Kevin Smith
Penelope Steiner^{*}
Pam Friend Szokol^{*}
Nasrin Thierer^{*}
Cherryl T. Thomas^{*}
Bryan Traubert^{*}
Olivia Tyrrell^{*}
Donna Van Eekeren^{*}
Roberta L. Washlow

Sir Andrew Davis
Music Director Emeritus

William Mason
General Director Emeritus

⁺ Audit Committee
^{*} Executive Committee
[•] National Member

Lyric

A Center of Excellence

The high-caliber training offered at The Patrick G. and Shirley W. Ryan Opera Center helps emerging talent become ready for star turns on the international stage

By Alana Guggenheim



Ryan Opera Center Music Director Craig Terry and Director of Vocal Studies Julia Faulkner during a coaching session.

The Patrick G. and Shirley W. Ryan Opera Center at Lyric Opera of Chicago nurtures the talents of some of the most promising operatic artists of each generation. Their journey begins with the highly competitive audition process involving hundreds of applicants from around the globe. It's a major achievement to be invited to join the program's prestigious Ensemble—but that's just the first step.

From day one, Ryan Opera Center members dive into the hard work they are here to undertake—the rigorous and comprehensive training required for emerging artists to develop international careers on the opera stage. Those multifaceted activities, centered backstage at Lyric, include individual coachings and group sessions; voice lessons; acting, movement, and audition classes with distinguished instructors; intensive language instruction; and repertoire coaching from resident faculty and staff as well as visiting experts. It is not uncommon to hear the experience likened to that undergone by Olympic athletes; the singers arrive in excellent condition, and then elevate their abilities and artistry to a world-class level.

Of all the assets and expertise harnessed to support the Ensemble, none could be more important than the coaching and instruction provided by the Center's Music Director Craig Terry and Director of Vocal Studies Julia Faulkner. Together, they make an extraordinary contribution in guiding, encouraging, and shaping the next generation of opera stars.

The Ryan Opera Center will mark its 50th anniversary next season, and boasts more than 300 artists (including the newer positions of pianist, conductor, stage director, and stage manager) as alumni. Over the years, support from the likes of acclaimed soprano Renée Fleming as Advisor at Large and exceptional donor generosity has enabled the Center to sustain its position as one of the opera world's most renowned artist-development programs.

Craig Terry has served as Music Director of the Ryan Opera Center since 2013, and before that spent 11 seasons at Lyric as an assistant conductor. He is an accomplished international performer as well, and recently added a Grammy



Ensemble mezzo-soprano Sophia Maekawa works with Julia Faulkner in a studio backstage at Lyric.



Craig Terry works with Ensemble pianist Michael Banwarth, tenor Travon D. Walker, and bass Ron Dukes.

Award to his extensive credits, winning for “Best Classical Solo Vocal Album” for his recording with Joyce DiDonato entitled *Songplay*. He also serves as artistic director of the Harris Theater’s popular *Beyond the Aria* series.

Terry’s pedagogy extends beyond the stage, emphasizing the need for artists to invest what he calls “150 percent” into every facet of their artistic life. He champions full emotional and artistic commitment, recognizing the intensity of the opera industry’s competition. “To have a successful performance career requires an incredible amount of dedication and effort,” says Terry. “The biggest thing for us to instill in our Ensemble is a love of learning and a love of the work. Because the work will only get harder, and there will only be more pressure as your career progresses. The stages get bigger and the expectations you put on yourself get higher.”

Terry helps shape artists’ repertoire choices, advising on artistic expression and fostering genuine connections with audiences. He emphasizes authenticity, urging artists to shed insecurities and express their truth through music, words, and characters. Terry’s coaching sessions, tailored to artists’ upcoming commitments, focus on refining the myriad of details to the highest possible level. The guidance spans language, musical interpretation, and

encouraging uniquely personal perspectives in character portrayal. The diverse repertoire studied by Ryan Opera Center members, from classical arias to pop songs, challenges the artists to showcase versatility beyond traditional boundaries.

Terry’s own fulfillment comes not just from working with current Ensemble members, but also in maintaining relationships with alumni, offering enduring support and witnessing their subsequent successes. “Not many days go by that I’m not contacted by an alum. Whether it’s a question or just hello or seeking advice. And that’s really fun. I love watching them continue to succeed and make their dreams come true.”

Julia Faulkner, Director of Vocal Studies, wholeheartedly echoes those sentiments and likewise fosters relationships with Ryan Opera Center artists that continue well past their Ensemble tenure. A soprano who enjoyed a successful international career, Faulkner developed a passion for teaching and has become one of the most sought-after voice instructors in the country. Her journey from accomplished performer in Europe to tenured professor at the University of Wisconsin-Madison eventually led her to the Ryan Opera Center in 2013. She too emphasizes not only vocal and musical excellence but also the development of well-rounded performers


ready for the professional stage. With an unwavering commitment to nurturing emerging artists, Faulkner's impact extends beyond the studio, fostering a community of support and artistic growth.

Weekly vocal lessons with Ensemble singers are a cornerstone in addressing various facets of singing, artistry, and performance. Breath management, dramatic elements, language, style, and professionalism—all are covered in depth during the sessions. The overarching goal is to transition artists from academia to full-fledged professional artists, instilling trust in their instincts and enabling them to discover their unique artistic gifts.

For Faulkner, it is magical seeing Ensemble members fulfill that goal and make their debut in a variety of roles on the Lyric Opera of Chicago stage. "I enjoy going down into the theater and seeing them in action, which is such a wonderful aspect of the training," says Faulkner. "You spend time in a room together, working on various aspects of good singing and artistry, and then you go and try it out on an actual stage with some of the best singers in the world next to you. Witnessing and participating in that experience is what's incredibly fun about my job."

Indeed, Lyric audiences are accustomed to seeing the rising stars of the Ryan Opera Center not only in the Ensemble's own concerts, but in prominent roles on the main stage. The singers are also invaluable to the company as understudies, frequently stepping in on short notice for roles big and small. (On closing day of this season's *Jenůfa*, for instance, Ryan Opera Center soprano Kathryn Henry sang the title role on short notice to great acclaim).

The Ensemble members are ready for these opportunities because of their training—and also because of the Center's intentionally familial environment. Faulkner and Terry—alongside Vice President and Director Dan Novak and the Center's Manager, Susanna McNatt—foster a positive and supportive atmosphere.

Through all facets of its operation—and with the help and support of numerous faculty, staff, and generous donors—the Ryan Opera Center aims to ensure the future of opera by nurturing the talents and skills of its Ensemble. It's deeply rewarding work. "This is truly the best job I have ever had," Faulkner adds. "I get to keep sending young people out into the world and watching their amazing progress. I'm surrounded by people who are invested in making something beautiful." 



Baritone Ian Rucker has a coaching lesson with Julia Faulkner.

Rossini's enchanting fairytale heroine is the downtrodden daughter of a selfish father, Don Magnifico. When Prince Ramiro (disguised as his own valet, Dandini) meets her, they fall instantly in love, leading—after a few complications—to a heartwarming happy ending. Rossini's score provides endless sparkle, with Cenerentola's and Ramiro's arias abounding in fabulous vocal virtuosity. There's also hilarity, thanks to the antics of Magnifico and Dandini. Two rising stars, Vasilisa Berzhanskaya and Jack Swanson, are joined by the incomparable Alessandro Corbelli to lead Lyric's cast, in Jean-Pierre Ponnelle's world-famous production led by the exciting Taiwanese conductor Yi-Chen Lin.



Robert Cohen/San Francisco Opera

Teresa Berganza originated the title role in this production at San Francisco's War Memorial Opera House in 1969.

Lyric

Cinderella



You don't have to be an expert lighting technician to illuminate a better future



Help power your portfolio with
the innovators of the Nasdaq-100

Invesco QQQ is the presenting sponsor of Lyric Opera of Chicago's
2023/24 season

Photographer: Kyle Flubacker

Not FDIC Insured May Lose Value Not Guaranteed by the Bank

There are risks involved with investing in ETFs, including possible loss of money. ETFs are subject to risks similar to those of stocks. Investments in the technology sector are subject to greater risk and are more greatly impacted by market volatility than diversified investments.

The Nasdaq-100 Index comprises the 100 largest non-financial companies traded on the Nasdaq. An investment cannot be made directly into an index.

Before investing, consider the fund's investment objectives, risks, charges and expenses. Visit [invesco.com](https://www.invesco.com) for a prospectus containing this information. Read it carefully before investing.

Invesco Distributors, Inc.

Cinderella (*La Cenerentola*)

Music by **Gioachino Rossini** | Opera in two acts in Italian

Libretto by **Jacopo Ferretti**

January 21m, 26, 30 and February 1m, 4m, 7m, 10, 2024

CHARACTERS IN ORDER OF VOCAL APPEARANCE

Angelina (Cenerentola)

Clorinda

Tisbe

Alidoro

Don Magnifico

Ramiro

Dandini

Vasilisa Berzhanskaya⁺

Teresa Castillo⁺

Sophia Maekawa[•]

Nicholas Newton

Alessandro Corbelli

Jack Swanson⁺

Joshua Hopkins

Conductor

Original Director

Revival Director

Set and Costume Designer

Lighting Designer

Chorus Director

Wigmaster and

Makeup Designer

Assistant Director

Stage Manager

Musical Preparation

Fight Director

Prompter

Projected English Titles

Yi-Chen Lin⁺

Jean-Pierre Ponnelle

Gregory A. Fortner⁺

Jean-Pierre Ponnelle

Duane Schuler

Michael Black

Sarah Hatten

Katrina Bachus

Sandra Moore

Susan Miller Hult

Keun-A Lee

Noah Lindquist

Jerad Mosbey

Stefano Sarzani

Chuck Coyl

Susan Miller Hult

Christopher Bergen

First performed by Rome's Teatro Valle on January 25, 1817.

First performed by Lyric Opera of Chicago on October 14, 1959.

⁺ Lyric debut

[•] Current Member, The Patrick G. and Shirley W. Ryan Opera Center

Synopsis

TIME & PLACE | **Legendary**

ACT I

Don Magnifico's daughters Clorinda and Tisbe are in the middle of an argument as their stepsister Angelina, called Cenerentola, who serves as the family maid, sings her favorite song. Alidoro, tutor to the prince, Don Ramiro, enters, dressed as a beggar, and Cenerentola gives him bread and coffee. Courtiers arrive to announce that Ramiro will soon pay a visit; he is looking for the most beautiful girl in the land and will hold a ball to choose his bride. Magnifico hopes that it will be one of his daughters. Ramiro enters, dressed in his servant's clothes so he can freely observe the prospective brides. Cenerentola returns and is startled by the presence of a stranger; the two are immediately attracted to each other. He asks her who she is, and Cenerentola stammers a confused explanation and runs away. Finally, the "prince" arrives—in fact Ramiro's valet, Dandini, in disguise. To Ramiro's amusement, Magnifico, Clorinda, and Tisbe fall over themselves flattering this prince, who invites them to the ball; Cenerentola asks to be taken along but Magnifico refuses. Left alone with Cenerentola, Alidoro tells her he will take her to the ball.

At Ramiro's palace, Dandini shares with the prince his negative opinion of the two sisters. Clorinda and Tisbe appear again, having followed Dandini (still posing as the prince). When he offers Ramiro as a husband to one of the sisters, they are outraged at the idea of marrying a servant. Alidoro enters with a beautiful unknown lady who strangely resembles Cenerentola.

INTERMISSION

**LYRIC'S 2023/24 SEASON IS
PRESENTED BY**



Julie & Roger Baskes

San Francisco Opera Production

**Scenery construction and painting
by the San Francisco Opera
Scene Shop.**

**Costumes fabricated by the
San Francisco Opera Costume Shop.**

**Additional costumes provided by
Krostyne Studio, Minnesota Opera
Costume Shop, The Tailor's Square
and Vicky Neufeld.**

**Projected English titles provided by
San Francisco Opera Association.**

**Lyric Opera of Chicago thanks its
Official Airline, American Airlines.**

APPROXIMATE TIMINGS

**This production will be performed
with one intermission.**

Running time

Act I	1 hour 40 minutes
Intermission	30 minutes
Act II	1 hour

TOTAL	3 hours 10 minutes
--------------	---------------------------

Lyric

Synopsis

continued

ACT II

Magnifico fears for his daughters' chances to marry the prince. Cenerentola, tired of being pursued by Dandini, tells him that she is in love with his servant. Overhearing this, Ramiro is overjoyed and steps forward, but Cenerentola says she will return home and doesn't want him to follow her. If he really cares for her, she says, he will find her. Meanwhile Magnifico, who still thinks that Dandini is the prince, insists that he decide which daughter he will marry. Dandini reveals that he is in fact the prince's servant, and Magnifico is furious.

Magnifico and the sisters return home in a bad mood and order Cenerentola, again in rags, to prepare supper. During a thunderstorm, Alidoro arranges for Ramiro's carriage to break down in front of Magnifico's castle so the prince has to take refuge inside. Cenerentola and Ramiro recognize each other, and she asks him to forgive her family.

At the prince's palace, Ramiro and Cenerentola celebrate their wedding. Magnifico tries to win the favor of the new princess, but she asks only to be acknowledged at last as his daughter. Born to misfortune, she has seen her life change and invites her family to join her, declaring that the days of sitting by the fire are over. [L](#)

Courtesy of San Francisco Opera



A scene from San Francisco Opera's 2014 production of *Cinderella*.

Lyric

First the Music: Jean-Pierre Ponnelle's Radical Method

by Justin Vickers



Cory Weaver

The cast of San Francisco Opera's 2014 production (above), at the Prince's ball. At left, a 1969 sketch by Jean-Pierre Ponnelle for Don Magnifico's home.



Kristin Loken

Primarily owing to his utter devotion to the musical score, the French opera director Jean-Pierre Ponnelle (1932–1988) ascended to the highest echelon of his craft. This fidelity was his answer to the age-old operatic debate central to Richard Strauss's *Capriccio* (1942), derived from the title of an opera by Antonio Salieri: *Prima la musica e poi le parole*, or, “First the music and then the words.” Ponnelle believed anything a designer or director could require was contained in the work of the composer and librettist. Especially later in

his career, working as both director and designer, his productions—from the costumes and stage direction to the set pieces and lighting schemes—reflected his radical, focused attention on the source material.

Ponnelle's vision for his creations transcended the size or style of the individual operas themselves. Whether in Wagner's all-encompassing stage works, Mozart's opera seria or comedies, or even 20th-century masterworks from Berg and Schönberg, Ponnelle immersed himself in his uncompromising conceptions. The results of these "whole world creations" elicited both glowing praise and purist disdain—but the mark he made on the discipline as director-designer is unmistakable and extends well into the 21st century. His productions were and still are welcomed onto the stages of the world's greatest opera houses.

Among his most beloved is *La Cenerentola*, a 1969 commission for San Francisco Opera under its longtime General Director Kurt Herbert Adler (1905–1988). The work provides an immediate glimpse of quintessentially Ponnellian attributes. Two-dimensional scenery evokes the muted hues of 19th-century postcards, against which the colors of his costume designs form striking contrasts (or blend intentionally into the setting), while the lighting thoughtfully focuses rather than disperses our attention. Every element on the stage is intended to amplify the music.

As a young music student in the Conservatoire de Paris, Ponnelle additionally studied painting (briefly at the Sorbonne with cubist Fernand Léger). It was this latter skill that brought him to the attention of composer Hans Werner Henze, and the composer's invitation for Ponnelle to design the sets and costumes for his two new ballets in Wiesbaden, *Jack Pudding* (1950) and *Anrufung Apolls* (1951). The following year, Ponnelle designed Henze's first opera, the twelve-tone *Boulevard Solitude* (itself a reconceived one-act *Manon Lescaut* set in postwar Paris). Ponnelle's designs for the opera were inspired by the Bauhaus movement established in 1919 Weimar, with clean lines, established rectilinear shapes, and stylized forms.

Ponnelle made his American debut under Adler's invitation in the late 1950s, designing Carl Orff's *Die Kluge* and *Carmina Burana*, and the following

season he was commissioned to design the American premiere of Richard Strauss's *Die Frau ohne Schatten* (the composer was a family friend of the Ponnelles). These early works from Ponnelle as designer—heavily influenced by his previous training as a painter—are awash with vivid color and audacious designs, a far cry from the productions that would follow. Adler had seen something brilliant in the early work that he was invested in cultivating and encouraging.

Ponnelle acknowledged several individuals as the inspiration for his approach, including actor-turned-director Carl Ebert (a co-creator of the Glyndebourne Festival Opera), with whom Ponnelle worked in 1950s Berlin. Ebert impressed upon the

young Ponnelle that he should "read a musical score with the eyes of a director." Together with the specific stage lighting and scenic theories of Adolphe Appia (1862–1928)—who espoused the ineluctable significance of unity between the director and the designer—Ponnelle formed his own musico-directorial practice.

In what was an organic and gradual evolution—certainly informed from his work with spoken theater—Ponnelle followed a prescriptive methodology of his own devising. This began with the music. In an *Opera Quarterly* interview three years before his untimely death, Ponnelle described his process: "I cannot think before I know the score perfectly, I cannot. Not only the piano score: I prefer to work with the full orchestral score... For me, all the information comes from the music. After that follows dramaturgical analysis, trying to discover the relationships between the characters... When the musical score and the analysis of the libretto are ready, I see my *mise-en-scène* clearly, automatically."

He eventually assumed the role of director *and* designer for all his projects, a dual capacity that facilitated and even necessitated close association with the conductors of his productions. He was a frequent collaborator with Claudio Abbado, Herbert von Karajan, and Nikolaus Harnoncourt, among others. "A conversation with him about a score," remarked the German conductor Wolfgang Sawallisch, who conducted Ponnelle's productions of Hindemith's *Cardillac* and Strauss's *Die Frau ohne Schatten*, "was a genuine dialogue."



Jean-Pierre Ponnelle



Carolyn Mason Jones

Ugo Benelli as Don Ramiro and Frederica von Stade as Angelina in San Francisco Opera's 1974 production.

When Ponnelle returned to San Francisco Opera in 1969, the *Cinderella* he premiered there embodied his evolved sensibilities. He determined that his own earlier works had relied too much on raucous amalgams of color. (His 1967 production of Rossini's *Il barbiere di Siviglia* for the Salzburg Festival revealed his new moderation and focused discipline.) Critics came to describe the approach as “anti-color”; he would counter by articulating color’s critical importance. “Onstage everything is a symbol,” he said. “Color takes on a dramaturgical significance... I use color to enhance the drama of a piece.” His embrace of an achromatic mise-en-scène spoke to his desire that the characters and their music—the essence of the world evoked by the full orchestral score—be experienced by the audience first and not explicitly through visual extravaganzas.

Of his initial conception for *La Cenerentola*, Ponnelle declared that it ought to conjure “the naïve quality of some Italian sketches from the Biedermeier period, 1820-30—that kind of milieu—a picture postcard out of the past.” Such a setting departs from the world of the fairy tale and its numerous early iterations, placing it closer to the era of its composer, Gioachino Rossini (1792–1868). His detailed conceptions of the composer’s comic characters’ attire

and overstated gestures position them, as the German press concluded with the 1981 Munich production, within the “brilliant *commedia dell’arte*” tradition.

The balance achieved between bleakness and humor is a hallmark of Ponnelle’s concept of *La Cenerentola*. When Alidoro—the opera’s surrogate for the Fairy Godmother—enters the stage as narrator and enchants the theater’s curtain to rise, this two-dimensional world is magically revealed. The set designs recall 18th-century tunnel books, predecessors to contemporary three-dimensional pop-up books, a view into which the audience has the perfect perspective. The façade of Don Magnifico’s once-great home appears as a sequence of cut-outs and engravings with a central hallway and dilapidated staircases between two adjacent rooms upstairs and alongside the hall.

The reference to postcards is also met out in the layered effects of multiple proscenium arches in Don Ramiro’s palace. The first downstage arch is the most visible to the audience and is decorated in rich rococo imagery, while those receding further upstage evince pen and ink sketches of the 18th century.

The characters’ costumes in Magnifico’s home are in no way a reflection of the high society to which they aspire, subsumed instead in dull tones with hints of the garish but tattered pink and pale blues worn by Clorinda and Tisbe. When vivid colors break Ponnelle’s otherwise fixed, selective color palette—a directorial theory he described more than once in interviews—the contrast renders a staggering effect. The brilliant red hunting jackets of Prince Ramiro’s courtiers, arriving with the invitation to the palace ball, provide counterpoint to the monotony of Magnifico’s residence. The drab taupes and browns of Angelina’s attire in her father’s home disappear at once from our mind when she enters the Prince’s palace in a long black and silver-trimmed ball gown, galvanizing a connection with Don Ramiro’s regal evening attire. In their beribboned Biedermeier excess, the stepsisters are a clear foil to Angelina and the Prince. In the opera’s finale, Ponnelle reintroduces the stepsisters and their father dressed in grey attire, suggesting an air of repentance, an appropriate binary to the dazzling white wedding dress worn by Angelina, which evokes the ballgown in which the Prince previously beheld her.

Ponnelle did not stop with the fusion of the scenery and costumes in representing Rossini’s masterpiece. The elegant, stylized grace and romance between Angelina and Prince Ramiro stands in stark relief to the exaggerated comedic roles in the opera—Don Magnifico and his daughters—whose obvious (albeit thoughtfully choreographed) physical humor derives from the music itself. It is evident that while Angelina’s stepsisters and



Teresa Berganza sang the lead role in the 1969 premiere.

their father might ridicule her as a matter of course, she is not the victim of physical cruelty. Ponnelle derived this from his careful study of Rossini's music. Musicologist and theater scholar Kristina Bendikas notes that if there were physical abuse of Angelina, it "would have broken the safety of the comic condition accepted by the audience" as the premise for the comedy they were observing.

Equally compelling scenes between Don Magnifico and his daughters portray Ponnelle's reading of the musical text, notably when the father is awakened from his unfinished dream and threatens to throw his chamber pot on the two but instead throws a pillow (which, moments later, he cradles like a baby). All of the action of the ensuing scene is perfectly aligned with Rossini's rambunctious score, its levels permitting the appearance of spontaneous improvisations from Don Magnifico.

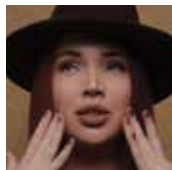
Another choice example occurs at Dandini's entrance, as the courtiers literally roll out the red carpet in perfect time with the music (when, of course, Dandini is disguised as the Prince). The sisters' behavior and their introductions reveal their true nature—and the comedic roles they serve in the opera—and, per Ponnelle's theories of his own role, are all revealed by the composer. For instance, whereas the stepsisters of *Brothers Grimm* are "beautiful of face, but vile and black of heart," the musical

world of Rossini's stepsisters, sidestepping the fairy tale, portrays a general foolishness and musical arguments between them, but never approaches anything close to vileness. Ponnelle creates a relatable humanity for them, not caricatures, reiterating his signal prioritization: directors must fully integrate the music and its subject as the sole inspiration for visual realization. "Only in this way," Ponnelle affirmed, "can musical reality become theatrical reality and re-establish the original text-music balance—because the *mise-en-scène*, the movement, then derives from the reading of the score."

La Cenerentola was Ponnelle's most successful and widely-viewed production during his lifetime, among a career marked by rich achievements and extensive variety. For a director who unselfconsciously wrote: "I do not work for the so-called posterity," this revival of the 1969 production at Lyric nevertheless speaks to the timelessness and value of Ponnelle's creations. **L**

Dr. Justin Vickers was recently named Distinguished Professor of Music at Illinois State University. He is currently writing The Aldeburgh Festival: A History of the Britten and Pears Era, 1948–1986 (Boydell Press) and editing Childhood and the Operatic Imaginary since 1900 (Oxford University Press).

Artist profiles



VASILISA BERZHANSKAYA ANGELINA

Lyric debut

In 2017, the Russian-born mezzo-soprano became a member of the Salzburg Festival's Young Artists Program and a member of the ensemble at the Deutsche Oper Berlin, where she remained until 2019. During the 2023/24 season, she will appear in *La forza del destino* at the Royal Opera House Covent Garden, *Maometto II* at the Teatro San Carlo in Naples, *Anna Bolena* at the Deutsche Oper Berlin, and *La Cenerentola* at the Wiener Staatsoper. At the Teatro Massimo di Palermo she will perform Rossini's *Stabat Mater*, before making her role debut as Carmen in Vienna and London. Her repertoire includes Angelina in *La Cenerentola* (Teatro dell'Opera di Roma, Theater Basel, Wiener Staatsoper), Marchesa Melibea in *Il viaggio a Reims* (Rossini Opera Festival, Deutsche Oper Berlin), Rosina in *Il barbiere di Siviglia* (Wiener Staatsoper, Deutsche Oper Berlin, Theater Basel, Mikhailovsky Theatre Saint-Petersburg, Novosibirsk State Opera Theater), Sinaïde in *Moïse et Pharaon*, Isabella in *L'italiana in Algeri* (Teatro Filarmonico di Verona, Concertgebouw Amsterdam), Dorabella in *Così fan tutte* (Teatro Maggio Musicale Fiorentino), Despina in *Così fan tutte* (Bolshoi Theatre), Aristeia in Vivaldi's *L'Olimpiade* (Concertgebouw Amsterdam), Vagaus in *Juditha Triumphans* (Dutch National Opera Amsterdam), Romeo in *I Capuleti e i Montecchi* (Teatro dell'Opera di Roma), Siebel in Gounod's *Faust* (Deutsche Oper Berlin), Olga in *Eugene Onegin* (Deutsche Oper Berlin), Fenena in *Nabucco* (Deutsche Oper Berlin, Royal Opera House), Diana in *Orphée aux enfers* (Salzburg Festival), and more. In 2021, Berzhanskaya was honored with the Young Singer of the Year award at the International Opera Awards.



JACK SWANSON RAMIRO

Lyric debut

This season the Minnesota-born tenor will debut with the Houston Grand Opera as Fenton in *Falstaff* and return to the Norwegian Opera for Ferrando in *Così fan tutte* and Ramiro in *La Cenerentola*, as well as to the Rossini Opera Festival for his signature role of Almaviva in *Il barbiere di Siviglia*. Swanson can also be heard in recital in Montreal and with the Sag Harbor Song Festival. Future engagements include debuts with the Metropolitan Opera and the Staatsoper Hamburg and returns to the Rossini Opera Festival and Houston Grand Opera, all in leading roles. Last season, Swanson premiered the title role in Paola Prestini's *Edward Tulane* with the Minnesota Opera, made debuts with the Austin Opera as Almaviva in *Il barbiere di Siviglia*, Utah Opera as Tonio in

La fille du régiment (role debut), and Atlanta Opera in *La Cenerentola*. In concert the tenor joined the Utah Symphony for *Carmina Burana* and the Mercury Chamber Orchestra in Houston for the tenor solo in Handel's *Messiah*, and performed in recital with Matinee Musicale in Duluth, Minnesota.



ALESSANDRO CORBELL DON MAGNifico

Previously at Lyric: Nine roles since 1986/87, most recently Sulpice/*The Daughter of the Regiment* (2023/24) and Dr. Bartolo/*The Barber of Seville* (2019/20).

Recent highlights for the Turin-born baritone include Michonnet/*Adriana Lecouvreur* at La Scala, Don Magnifico/*La Cenerentola* in Zurich and Vienna, and Dr. Bartolo/*The Barber of Seville*, a role he sang at Lyric in 2013/14, at Arena di Verona, Monte Carlo, Glyndebourne, and San Francisco Opera. Other recent successes include *Don Pasquale* (Vienna, Glyndebourne, DVD), Taddeo/*L'italiana in Algeri* (Salzburg), Dulcamara/*L'elisir d'amore* (Lyric, Metropolitan Opera, Madrid, Leipzig, Barcelona, San Francisco, and Houston, among other houses), and Sulpice/*La fille du régiment* (Covent Garden, Paris, Metropolitan Opera). Corbelli is also renowned as Michonnet/*Adriana Lecouvreur* (Berlin, London, Paris), Don Alfonso/*Così fan tutte* (Vienna), *Falstaff* (Toulouse, Glyndebourne), and *Gianni Schicchi* (Metropolitan Opera, Glyndebourne, Turin). In 2017 he sang his first Melitone/*La forza del destino* and recently reprised the role in the acclaimed new production at London's Royal Opera House. He holds the Premio Abbiati, the Italian music critics' prize, for his Leporello/*Don Giovanni* at La Scala and the similarly prestigious Rossini d'Oro for his Don Geronio/*Il Turco in Italia* at Pesaro's Rossini Opera Festival.



JOSHUA HOPKINS DANDINI

Previously at Lyric: Five roles since 2014/15, most recently Raimbaud/*Le Comte Ory* (2022/23) and Belcore/*The Elixir of Love* (2021/22).

Highlights this season for the Grammy-nominated Canadian baritone include a return to LA Opera to sing Figaro in *Il barbiere di Siviglia* and a company debut at La Monnaie de Munt creating the roles of Apollo/Angry Audience Member in the world premiere of *Cassandra* by Bernard Foccroulle and Matthew Jocelyn. He also returns to the Canadian Opera Company for Malatesta in *Don Pasquale*. Concert engagements include Bach's Christmas Oratorio with Orchestra of St. Luke's at Carnegie Hall and Handel's *Messiah* with the Toronto Symphony Orchestra

under the baton of Jane Glover. His most personal work, *Songs for Murdered Sisters*, is a song cycle by composer Jake Heggie and author Margaret Atwood, conceived by Hopkins in remembrance of his sister, Nathalie Warmerdam. Following the critically acclaimed film and JUNO-nominated album releases, the chamber version of the work received its live world premiere with the composer at the piano at Houston's Rothko Chapel in March 2022, in partnership with Houston Grand Opera. In 2023, the baritone gave the live world premiere of the work's orchestral version with Canada's National Arts Centre Orchestra. Hopkins has received numerous awards and distinctions, including most recently a JUNO Award for his portrayal of Athanaël in the Chandos recording of Massenet's *Thaïs* in concert with the Toronto Symphony Orchestra conducted by Sir Andrew Davis. He was the winner of both the Verbier Festival Academy's 2008 Prix d'Honneur and the Borletti-Buitoni Trust Award in 2006.



NICHOLAS NEWTON ALIDORO

Previously at Lyric: Father/*Hansel and Gretel* (2022/23).

Highlights for the bass-baritone this season include the Houston Grand Opera world premiere of *Intelligence*, created by composer Jake Heggie, librettist Gene Scheer, and director/choreographer Jawole Willa Jo Zollar, John Adams's *El Niño* in a new production at the Metropolitan Opera, and Leporello in *Don Giovanni* at the Santa Fe Opera under the baton of Music Director Harry Bicket. Concert performances of the season include Handel's *Messiah* with the Ann Arbor Symphony, and Terence Blanchard's *Fire Shut Up In My Bones* in a new suite of music from the opera, performed with the composer, his E-Collective, and the Turtle Island Quartet in Austin, Houston, and Richmond. Last season, Newton made his European debut at the Salzburg Festival in Purcell's *The Indian Queen*, a Detroit Opera debut in Handel's *Xerxes*, and a Dallas Opera debut in *Rigoletto*. Earlier highlights include a Santa Fe Opera debut as Don Basilio in a new production of *Il barbiere di Siviglia* and the world premiere at Houston Grand Opera of Joel Thompson and Andrea Davis Pinkney's *The Snowy Day*. Newton completed his training at the Houston Grand Opera Studio in the 2020/21 season and has appeared in numerous productions with the company. Past highlights also include *La bohème* and *Sweeney Todd* with Wolf Trap Opera, *Rigoletto* with Opera Theatre of Saint Louis, and both *Susannah* and *Giulio Cesare* at Rice University.



TERESA CASTILLO CLORINDA

Lyric debut

This season the Costa Rican-American soprano will debut with the Littleton

Symphony, singing *Reflections on a Mexican Garden*, which was written for her by composer Kevin Padworski. Recent highlights include a house debut at the Teatro Lirico di Cagliari, where she performed the role of Maria in Francesca Zambello's production of *West Side Story*, and house and role debuts with Chicago Opera Theater as Miss Wordsworth in *Albert Herring* and Sara Turing in *The Life and Death(s) of Alan Turing*, as well as a debut with Opera Southwest as La Comtesse Adèle in *Le Comte Ory*. Last summer, Castillo made her Lincoln Center debut as Annetta in Ricci's *Crispino e la Comare* with Teatro Nuovo. Additional recent engagements of note include house debuts with Opera San Jose (Frasquita in *Carmen* and Maria in *West Side Story*) and Opera Lafayette (as Lucette in Gretry's *Silvain*). Castillo has had success in numerous competitions including the Lois Alba Aria Competition, Opera Index, The Jensen Foundation Vocal Competition, Mildred Miller International Voice Competition, The Anita Cerquetti International Competition, Altamura/Caruso International Voice Competition, Classical Singer Magazine Competition, and the Denver Lyric Opera Guild Competition.



SOPHIA MAEKAWA TISBE

Previously at Lyric: Shepherdess/*Jenůfa* (2023/24).

The first-year mezzo-soprano with the Ryan Opera Center from Kyoto, Japan, was a 2022 Santa Fe Opera Apprentice Artist, understudying Rosina/*Il barbiere di Siviglia* and Comrade Chin and Shu Fang/*M. Butterfly*, and a 2021 Gerdine Young Artist with Opera Theatre of Saint Louis, understudying Kadin/*On the Edge*. She recently received her Bachelor of Music degree from the Curtis Institute of Music in Philadelphia. While there, the mezzo performed in *Ariodante* (title role), *Albert Herring*, and *L'enfant et les sortilèges*. Other roles in her repertoire include Hermia/*A Midsummer Night's Dream*, Annio/*La clemenza di Tito*, Mercédès/*Carmen*, Second Woman/*Dido and Aeneas*, and Mrs. Nolan/*The Medium*. Concert appearances include the Wichita Symphony and Curtis Symphony Orchestra with Yannick Nézet-Séguin. Maekawa was a finalist at the 2022 Opera Grand Rapids Competition and semi-finalist in the 2021 Houston Grand Opera Eleanor McCollum Competition. *Sophia Maekawa is sponsored by David and Janet Fox, Richard W. Shepro and Lindsay E. Roberts, and Mark and Gale Kozloff.*



YI-CHEN LIN CONDUCTOR

Lyric debut

Highlights of the conductor's 2023/24 season include debuts with the Sachsische Staatskapelle Dresden and Den Norske Opera (*Dialogues des Carmélites*) as well as concerts with the Orquesta Sinfónica de Tenerife, Taipei Symphony Orchestra, Bochumer Symphoniker, and the National Taiwan Symphony Orchestra. She will also return to the Opéra Orchestre National de Montpellier, the Bregenz Festival (*Tancredi*), and the Deutsche Oper Berlin (*Madama Butterfly*). Recent highlights include appearances with the Royal Danish Opera (*Carmen*), a new production at Oper Frankfurt (*Die Kluge & Der Zar läßt sich photographieren*), and an appearance at Staatstheater Stuttgart (*Don Giovanni*), as well as concerts with the Düsseldorfer Symphoniker and the Opéra Orchestre National de Montpellier. She recently returned to the Orquesta Sinfónica RTVE Madrid and to the Bregenz Festival for the revival of *Madama Butterfly*. From 2020/21 until spring 2023, Lin was Kapellmeister at the Deutsche Oper Berlin, where she made her acclaimed debut with a new production of Mark-Anthony Turnage's *Greek*, and where she gave numerous repertoire performances including *Carmen*, *Die Zauberflöte*, *Die Fledermaus*, *Il barbiere di Siviglia*, *Simon Boccanegra*, and *Un ballo in maschera*. Concert invitations include leading orchestras such as the Tonhalle Orchestra Zurich, Frankfurt Radio Symphony, SWR Symphony Orchestra, Orchestra Filarmonica del Teatro Comunale di Bologna, and the Slovenian Philharmonic Orchestra. Other opera engagements include the Teatro Nacional de São Carlos in Lisbon, Teatro de la Zarzuela in Madrid (*Carmen*), Teatro Comunale di Bologna (*Le nozze di Figaro*), Teatro Principal in Palma de Mallorca (*L'elisir d'amore* and *Les contes d'Hoffmann*) and Ópera de Tenerife (*Il viaggio a Reims*). Conductor Yi-Chen Lin is sponsored by **Lori Julian for the Julian Family Foundation**.



JEAN-PIERRE PONNELLE ORIGINAL DIRECTOR/DESIGNER

Previously at Lyric: Eleven productions since 1972, most recently *Tosca* (2021/22) and *Idomeneo* (2018/19).

The French director-designer (1932-1988) created his first production design in Hannover; Henze's *Boulevard Solitude* (world premiere). He made his directing debut with *Tristan und Isolde* in 1963 in Düsseldorf, thereafter designing and directing all his productions. Ponnelle made his international breakthrough with *The Barber of Seville* at the 1968 Salzburg Festival. His success led to a remarkable series of productions for La Scala, Covent Garden, the Metropolitan Opera, the major houses of San Francisco, Munich, and Zurich, and the festivals of Salzburg and Bayreuth. Among his greatest achievements were the three Monteverdi operas in Zurich; *Tristan* for Bayreuth; the Mozart/da Ponte operas in Paris; the world premieres of Reimann's *Lear* and *Troades* in Munich; and three Rossini works at La Scala. Many of his productions have been remounted repeatedly worldwide, and he adapted many of them himself for video.



GREGORY A. FORTNER REVIVAL DIRECTOR

Lyric debut

The American stage director's comic opera and theater work have been seen throughout the U.S., Brazil, Japan, Europe, and China. Highlights include *Don Giovanni* and *La bohème* (LA Opera), *Falstaff* (Aspen Music Festival), *La Cenerentola* (New National Theater Tokyo, San Francisco Opera), *Il trovatore* (Teatro Municipal Rio de Janeiro), *The Tempest* (La Scala, Wiener Staatsoper), *Il barbiere di Siviglia* (Opera Carolina), *Madama Butterfly* (Detroit Opera), *Pagliacci* (Toledo Opera), *Don Giovanni* (Anchorage Opera, Toledo Opera), *Faust* (Toledo Opera), *Lucia di Lammermoor* (Palm Beach Opera), *Carmen* (Connecticut Opera, Opera Carolina), *Die Fledermaus* (Palm Beach Opera), and *Tristan und Isolde* (Eugene Symphony). Directing credits for the theater include *When You Wish* (Walt Disney Company), *Old Clown Wanted* (National Theater of Bucharest, Sibiu International Festival, Arad Underground Festival, New Jersey Rep, Trapdoor Theater, Act French: A Festival of New French Plays), and *Scotland Road* (Detroit Rep). As an associate director, Fortner has worked with such notable directors as Robert Lepage, Peter Stein, Sir Peter Hall, Michael Grandage, Bartlett Sher, Robert Altman, Adrian Noble, and Ron Daniels. He was also a member of the directing staff at the Metropolitan Opera in New York for nine seasons.



DUANE SCHULER LIGHTING DESIGNER

Previously at Lyric: More than 200 productions since 1977, most recently *Ernani* (2022/23) and *Tosca* (2021/22).

Lyric's former resident lighting designer has recently created lighting for the Vienna State Opera (*Lucia di Lammermoor*), the Santa Fe Opera (*Jenůfa*), and Dutch National Opera in Amsterdam (*La Cenerentola*). Other operatic highlights have included works as diverse as *Turandot* (La Scala), *Pelléas et Mélisande* and *Cendrillon* (Metropolitan Opera, where he has designed more than 25 productions), *La fanciulla del West* (Opéra national de Paris), *Elektra* (Salzburg Festival), *Fidelio* (London's Royal Opera House), *Béatrice et Bénédict* (Glyndebourne Festival Opera), *Don Pasquale* (Théâtre Royal de la Monnaie), and *Candide* (the Santa Fe Opera). Ballet credits include *Swan Lake* and *The Snow Maiden* (American Ballet Theatre), *The Sleeping Beauty* (Stuttgart Ballet), *Giselle* (Deutsche Ballet), and *The Nutcracker* (Houston Ballet). Theater credits include *House and Garden* (Manhattan Theatre Club), *The Royal Family* (Ahmanson Theatre in Los Angeles), *The Importance of Being Earnest* (Broadway), and *Ragtime* (The 5th Avenue Theatre in Seattle). Schuler is a founding partner of Schuler Shook, a theater planning and architectural lighting design firm. *Lighting designers are supported by the Mary-Louise and James S. Aagaard endowment in honor of Duane Schuler.*

Fight with **pride.**

Lyric
OPERA OF
CHICAGO

CHAMPION

AN "OPERA IN JAZZ" BY

**Terence Blanchard
& Michael Cristofer**

January 27 - February 11

Enrique Mazzola, Conductor

Tickets on sale now.

lyricopera.org/champion



COMPOSER
Terence Blanchard

 **Invesco QQQ**
Season Sponsor

Lyric's 2023/24 Season is sponsored by **Invesco QQQ** and **Julie and Roger Baskes**.

Lyric's presentation of Blanchard and Cristofer's *Champion* is generously made possible by **The Zell Family Foundation, Willkie Farr & Gallagher LLP, Pritzker Traubert Foundation, the Gramma Fisher Foundation of Marshalltown, Iowa, Ethel & Bill Golen, The Joyce Foundation, Lori Ann Komisar and Morris Silverman and Roberta L. and Robert J. Washlow**. Lyric Opera of Chicago thanks its Official Airline, **American Airlines**, and acknowledges support from the **Illinois Arts Council Agency**.

PHOTO: TODD ROSENBERG/LYRIC OPERA OF CHICAGO



MICHAEL BLACK
CHORUS DIRECTOR

The Australian Chorus Director is in his 11th season at Lyric, having held this position at Opera Australia in Sydney from 2001 to 2013. Black has served in this capacity for such distinguished organizations as the Edinburgh International Festival, Opera Holland Park (London), the Chicago Symphony Orchestra, and, in Australia, the Sydney Symphony Orchestra, the Philharmonia Choir, Motet Choir, the Cantillation chamber choir, and the Melbourne Symphony Orchestra. Other activities include preparing *The Damnation of Faust* chorus and Haydn's *Creation* at the Grant Park Music Festival, where he has worked for five seasons. He has served as chorus director for close to 140 different operas on four continents, and his work has been recorded and/or aired on ABC, BBC, PBS, for many HD productions in movie theaters, and on television. *Michael Black is supported by the Howard A. Stotler Chorus Director Endowed Chair.*



SARAH HATTEN
WIGMASTER & MAKEUP DESIGNER

Lyric's wigmaster and makeup designer has worked in a wide repertoire at Des Moines Metro Opera, Detroit Opera (formerly Michigan Opera Theatre), Columbus Opera, Toledo Opera, the Cabrillo Music Festival, and the University of Cincinnati College-Conservatory of Music. She has also worked at the Glimmerglass Festival and the major opera companies of Los Angeles, Omaha, Cleveland, Sarasota, and Central City, as well as Wisconsin's American Players Theatre and, in Los Angeles, the Pantages Theatre and the Geffen Playhouse. *Sarah Hatten is supported by the Marlys A. Beider Wigmaster and Makeup Designer Endowed Chair.* 

TWO GREAT WAYS TO GET INVOLVED WITH LYRIC NEXT

For college students

Take a study break with **\$20 tickets**,
plus exclusive events and more.
lyricopera.org/next

Lyric Young Professionals

Meet dynamic opera lovers under 45 and
access **\$35 tickets** and **exclusive events**.
lyricopera.org/LYP

Lyric
OPERA OF
CHICAGO

PHOTOS: KYLE FLUBACKER

VERDI

AIDA

Love. Loyalty. Betrayal.

March 9 - April 7

***Starring** Michelle Bradley,
Jamie Barton, and Russell Thomas*

Enrique Mazzola, Conductor

Tickets on sale now.

lyricopera.org/aida



Lyric
OPERA OF
CHICAGO

 **Invesco QQQ**
Season Sponsor

Lyric's 2023/24 Season is sponsored by **Invesco QQQ** and **Julie and Roger Baskes**.

Lyric's presentation of Verdi's *Aida* is generously made possible by an **Anonymous Donor**, **The Julius Frankel Foundation**, **Mary Patricia Gannon Trust**, **Mr. and Mrs. William C. Vance**, **Liz Stiffel**, **Willkie Farr & Gallagher LLP**, and **ITW**.
Lyric Opera of Chicago thanks its Official Airline, **American Airlines**, and acknowledges support from the **Illinois Arts Council Agency**.

PHOTO: SCOTT SUCHMAN/WASHINGTON NATIONAL OPERA

Orchestra & Chorus

MUSIC STAFF

Kedrick Armstrong
Michael Banwarth
William C. Billingham
Tiffany Chang
Patrick Furrer
Susan Miller Hult
Donald Lee III^{^^}
Keun-A Lee
Noah Lindquist
Francesco Milioto
Jerad Mosbey
Stefano Sarzani
Eric Weimer
Dean Whiteside[^]

ORCHESTRA

Violin I

Robert Hanford, *Concertmaster*,
Mrs. R. Robert Funderburg
Endowed Chair
Emily Nebel,
Assistant Concertmaster
Alexander Belavsky
Kathleen Brauer
Laura Miller
Liba Shacht
Heather Wittels
Bing Jing Yu

Violin II

Yin Shen, *Principal*
John Macfarlane, *Assistant*
Principal
Diane Duraffourg-Robinson
Ann Palen
Irene Radetzky
John D. Robinson
David Volfe

Viola

Carol Cook, *Principal*
Terri Van Valkinburgh,
Assistant Principal
Patrick Brennan
Amy Hess
Melissa Trier Kirk

Cello

Calum Cook, *Principal*
Ana Kim, *Assistant Principal*
Mark Brandfonbrener
William H. Cernota
Walter Preucil

String Bass

Ian Hallas*, *Principal*
Samuel Shuhan,
Acting Principal
Andrew L. W. Anderson,
Acting Assistant Principal
Gregory Sarchet
Collins R. Trier

Flute

Marie Tachouet, *Principal*
Dionne Jackson, *Assistant Principal*
Alyce Johnson

Piccolo

Alyce Johnson

Oboe

Paul Lueders, *Principal*
Judith Zunamon Lewis,
Acting Assistant Principal

English Horn

Judith Zunamon Lewis

Clarinet

Heesoo Kim, *Principal*
Susan Warner*,
Assistant Principal
Trevor O'Riordan**,
Acting Assistant Principal

Bass Clarinet

Trevor O'Riordan**

Bassoon

Preman Tilson, *Principal*
Lewis Kirk, *Assistant Principal*

Contrabassoon

Lewis Kirk

Horn

Jonathan Boen, *Principal*
Fritz Foss, *Assistant Principal/*
Utility
Robert E. Johnson, *Third Horn*
Samuel Hamzem
Neil Kimel

Trumpet

William Denton, *Principal*
Rebecca Oliverio,
Acting Assistant Principal

Trombone

Jeremy Moeller, *Principal*
Mark Fisher, *Assistant Principal*
Mark Fry**

Bass Trombone

Mark Fry**

Tuba

Andrew Smith, *Principal*

Timpani

Edward Harrison, *Principal*

Percussion

Douglas Waddell,
Acting Principal
Eric Millstein,
Acting Assistant Principal

Harp

Lynn Williams, *Principal*

Librarian

John Rosenkrans, *Principal*

Stage Band Contractor

Christine Janicki

EXTRA MUSICIANS

Eleanor Bartsch, *violin*
Injoo Choi, *violin*
Renee Gauthier, *violin*
Sheila Hanford, *violin*
Rika Seko, *violin*
Rebecca Swan, *viola*
Jeremy Attanaseo, *bass*
Amy Barwan, *oboe*
Theresa Zick, *clarinet*
Dave Inmon, *trumpet*
Jerad Mosbey, *harpsichord*

* On leave, 2023/24 Season

** Season Substitute

[^] Solti Foundation U.S. Opera Residency

^{^^} Ryan Opera Center Conductor/Pianist

The Lyric Opera Orchestra string sections utilize revolving seating. Players behind the front desk change seats systematically and are listed alphabetically in the roster above.

**CHORUS DIRECTOR
AND HEAD OF MUSIC**

Michael Black
The Howard A. Stotler
Endowed Chair

REGULAR CHORUS**Soprano**

Sharon Garvey Cohen
Cathleen Dunn
Desirée Hassler
Rachael Holzhausen
Laureen Janeczek-Wysocki
Kimberly McCord
Heidi Spoor
Stephani Springer
Sherry Watkins

Mezzo-Soprano

Marianna Kulikova
Yvette Smith
Marie Sokolova
Emma Sorenson
Maia Surace
Corinne Wallace-Crane
Pamela Williams
Michelle K. Wrighte

Tenor

Geoffrey Agpalo
Timothy Bradley
Hoss Brock
William M. Combs
John J. Concepcion
Kenneth Donovan
Jared V. Esguerra
Joseph A. Fosselman
Cullen Gandy
Cameo T. Humes
Tyler Samuel Lee
Thomas L. Potter
Joe Shadday

Bass

David DuBois
Robert Morrissey
Rafael W. Porto
Craig Springer
Vince Wallace
Nicholas Ward
Ronald Watkins
Nikolas Wenzel
Max Wier
Jonathan Wilson

**CORE SUPPLEMENTARY
CHORUS****Soprano**

Carla Janzen
Joelle Lamarre
Emily Mwila
Tara Wheeler

Mezzo-Soprano

Christina G. Adams
Cara Collins

Tenor

Joshua Benevento
Klaus Georg

Bass

Christopher Filipowicz
David Govertsen
Nicolai Janitzky
Dan Richardson

**SUPPLEMENTARY
CHORUS****Soprano**

Nicole Besa
Regina Ceragioli
Anna Donnelly
Cassandra Douglas
Makeda D. Hampton
Elise Hurwitz
Kimberly Jones
Katelyn Lee
Rosalind Lee
Amanda Payne
Emlynn Shoemaker
Diana Stoic
Kelsea Webb

Mezzo-Soprano

La'Shelle Allen
Daveda Browne
Leah Dexter
Christina Eberling
Elizabeth Frey
Rachel Ann Girty
Morgan Middleton
Emily Price
Ola Rafalo
Marissa Simmons

Tenor

Damon Cole
Kevin Courtemanche
Matthew Daniel
Bradyn Debysingh
Ace Gangoso
Alex Guerrero
Darell Haynes
Jianghai Ho
Ernest C. Jackson Jr

Taiwan Norris
Nathan Oakes
Steven Michael Patrick
Brett Potts
Christopher Sierra
Brian Skoog
Ryan Townsend Strand

Bass

Evan Bravos
Michael Cavalieri
Samuel Dewese
Chris DiMarco
Dimitri German
Kirk Greiner
David Guzmán
Earl Hazell
Stephen Hobe
Brian Hupp
Jawan Jenkins
Ashton Jones
Joseph Lodato
Jeremy Osborne
Douglas Peters
William Powell III
Ian R. Prichard
Atticus Rego
Rodney Sharp
Aaron Wardell

SUPERNUMERARIES

Steffen Diem Garcia
Hank Mandziara
Michael Ortyl
Lorenzo Parnell⁺
Tom Valente
Christopher Vaughn
Jordan David Wallace

⁺ Lyric debut

With the generous support of individuals and organizations, Lyric is leading the advancement of opera in America—continually advancing artistic excellence, increasing relevance and reach for both traditional and new audiences, engaging our diverse communities through signature learning and exploration initiatives, and expanding our role as a cultural cornerstone in Chicago. You are our partners in this important shared enterprise—and we sincerely thank you.



Lyric

**Thank you for
your support**

Bravissimi

We gratefully acknowledge the members of the Lyric family who have contributed a total of \$1 million+ throughout the history of the company. Lyric thrives due to the incredible generosity of these individuals, foundations, and corporations.

\$50,000,000+

The Facilities Fund of Lyric Opera of Chicago and Chicago Symphony Orchestra, John H. Bryan°, James W. Cozad°, H. Laurance Fuller°, and Patrick G. Ryan

\$30,000,000+

Nancy W. Knowles°

\$15,000,000+

Patrick G. & Shirley Welsh Ryan

\$10,000,000+

Anonymous
Julie & Roger Baskes
The Chicago Community Trust
The Crown Family
J. Thomas Hurvis & Ann Andersen
and the Caerus Foundation
Elizabeth Morse Genius Charitable Trust
and The Elizabeth Morse Charitable Trust
National Endowment for the Arts
The Negaunee Foundation

\$7,500,000+

Sonia Florian
Gramma Fisher Foundation of Marshalltown, Iowa
Julius Frankel Foundation
Illinois Arts Council Agency
Martha J. Jacobshagen°
John D.° & Alexandra C. Nichols
Anne & Chris Reyes

\$5,000,000+

Anonymous (4)
Abbott Fund
Ameritech/SBC/AT&T
Stefan Edlis° & Gael Neeson
The Grainger Foundation
Mr. & Mrs. Dietrich M. Gross
Irma Parker°
The Kiphart Family
John D. and Catherine T. MacArthur Foundation
The Andrew W. Mellon Foundation
The Monument Trust (UK)
Sidney L.° & Bettie B. Port°
Earl & Brenda Shapiro Foundation
Lisbeth Stiffel
Mr.° & Mrs. William C. Vance

\$2,500,000+

Anonymous (3)
American Airlines
Aon
Mrs. A. Watson Armour°
Boston Consulting Group
Randy L. & Melvin R.° Berlin
Henry & Gilda Buchbinder Family
Carolyn S. Bucksbaum
The Butler Family Foundation
Challenge III Fund – Government
City of Chicago Department of Cultural Affairs
and Special Events
Nelson D. Cornelius°
Mr.° & Mrs. John V. Crowe
The Davee Foundation
Mrs. Mary B. Galvin
Ann & Gordon Getty Foundation
Mr. & Mrs. William B. Graham°
Howard L. Gottlieb & Barbara G. Greis
John R. Halligan Charitable Fund
The Harris Family Foundation

Invesco QQQ
 ITW
 The Edgar D. Jannotta Family
 Mr.° & Mrs. Fred A. Krehbiel
 Josef & Margot Lakonishok
 Fred McDougal° & Nancy Lauter McDougal°
 Malott Family Foundation
 Mazza Foundation
 Sylvia Neil & Daniel Fischel
 Northern Trust
 Mr. & Mrs. William A. Osborn
 PwC
 Daniel F. & Ada L. Rice Foundation
 Dr. Scholl Foundation
 Clarke and Adine Stayman Trusts
 Robert and Penelope Steiner Family Foundation
 Howard A. Stotler°
 Mrs. Herbert A. Vance°
 Cynthia Wood°

\$1,000,000+

Anonymous (3)
 Katherine A. Abelson
 Paul M. Angell Family Foundation
 Atkinson Family Foundation
 Walter F. Bandi° & Elsa E. Bandi°
 Bank of America and Merrill Lynch
 Baxter International Inc.
 James N. & Laurie V. Bay
 Marlys A. Beider
 BMO Financial Group
 The Brinson Foundation
 Bulley & Andrews
 Marion A. Cameron-Gray
 Amy & Paul Carbone
 David W. Carpenter° and Orit K. Carpenter
 JP Morgan Chase & Co.
 Elizabeth F. Cheney Foundation
 Mr.° & Mrs. James W. Cozad
 Joanne Toor Cummings°
 The Edgar Foster Daniels Foundation
 Deutsche Bank
 Exelon
 Maxine P. & W. James Farrell
 Elaine Frank°
 Richard° & Barbara Franke
 Brena & Lee A. Freeman, Sr. Charitable Association
 Lloyd A. Fry Foundation

Ambassador & Mrs. Ronald Jay Gidwitz
 Ethel & William° Gofen
 Sue & Melvin Gray
 Harold Hartshorne, Jr.°
 Mr. & Mrs. Ben W. Heineman°
 Walter E. Heller Foundation
 H. Earl & Miriam U. Hoover°
 Invenergy
 Jenner & Block
 Kemper Educational & Charitable Fund
 Kirkland & Ellis Foundation
 Mr. & Mrs. Sanfred Koltun
 Kraft Foods
 Karen Z. Gray-Krehbiel & John H. Krehbiel, Jr.
 LaSalle Bank
 Anne P. Lederer Research Institute
 Arthur B. Logan°
 Jim° & Kay Mabie
 Brooks and Hope McCormick Foundation
 Chauncey and Marion D. McCormick
 Family Foundation
 Robert R. McCormick Trust
 Jim° & Vicki Mills/Jon & Lois Mills
 Robert and Susan° Morrison
 Richard M. Morrow°
 Allan & Elaine Muchin
 Jerome and Elaine Nerenberg Foundation
 Susan & Nick Noyes/Make It Better Media Group
 Nuveen Investments
 Gregory O'Leary & Patricia Kenney
 David & Sheila Ormesher
 I.A. O'Shaughnessy Foundation
 Peer & Sarah Pedersen°
 Polk Bros. Foundation
 Prince Charitable Trusts
 Mrs. Jay A. Pritzker
 The Regenstein Foundation
 Lloyd E. Rigler - Lawrence E. Deutsch Foundation
 Harry A. Root, Jr.°
 Richard O. Ryan
 Sara Lee Foundation
 Rose L. Shure° & Sidney N. Shure°
 Mr. & Mrs. J. W. Van Gorkom°
 The Wallace Foundation
 Lois L. Ward°
 Roberta L. Washlow & Robert J. Washlow
 Robert & Floretta Weiss
 Bernard E. Williams Trust
 Zell Family Foundation

° Deceased

Production sponsors

The 2023/24 Season is presented by  **Invesco QQQ** and Julie & Roger Baskes

The Flying Dutchman

Anonymous Donor
Josef & Margot Lakonishok
Alice & John Butler⁺
H. Gael Neeson⁺
Sylvia Neil & Daniel Fischel⁺
Robert and Penelope Steiner Family Foundation⁺



An Evening with Audra McDonald

Patrick and Shirley Ryan Family Foundation
Liz Stiffel



The Daughter of the Regiment

Sonia Florian
Marion A. Cameron-Gray



Jenůfa

Presenting Sponsors: Julie & Roger Baskes

David W. Carpenter[°] and Orit K. Carpenter,
in loving memory of David W. Carpenter
Richard O. Ryan
Patricia A. Kenney & Gregory J. O'Leary

+ Enrique Circle

The Enrique Circle is composed of Lyric's most dedicated supporters who are committed to championing Maestro Enrique Mazzola's exciting artistic vision and legacy.

Champion

Zell Family Foundation
The Pritzker Foundation and
the Pritzker Traubert Foundation
Gramma Fisher Foundation of Marshalltown, Iowa
Ethel & Bill Gofen
The Joyce Foundation
David W. Carpenter[°] and Orit K. Carpenter,
in loving memory of David W. Carpenter^{}*
Virginia Tobiasson^{*}
Alice & John Butler⁺
H. Gael Neeson⁺
Sylvia Neil & Daniel Fischel⁺
Robert and Penelope Steiner Family Foundation⁺⁺
Lori Ann Komisar & Morris Silverman
Roberta L. & Robert J. Washlow



Aida

Anonymous Donor
The Julius Frankel Foundation
Mary Patricia Gannon Trust
Mr.[°] and Mrs. William C. Vance
Liz Stiffel
Alice & John Butler⁺
H. Gael Neeson⁺
Sylvia Neil & Daniel Fischel⁺
Robert and Penelope Steiner Family Foundation⁺



Mozart Requiem

Lead Sponsor: The Negaunee Foundation
Randy L. & Melvin R.[°] Berlin
Alice & John Butler⁺
H. Gael Neeson⁺
Sylvia Neil & Daniel Fischel⁺
Robert and Penelope Steiner Family Foundation⁺

* The New Work Fund

Supporters of the New Work Fund allow Lyric to lead the creation of tomorrow's classics, and broaden the appeal and relevance of our art form to ensure that grand opera is alive and meaningful for 21st-century audiences.

Additional support for Lyric's 2023/24 Season is generously provided by the **Production Circle**.

To learn more about Lyric sponsorship opportunities, please visit lyricopera.org/support-lyric/major-investments/production-sponsorships.

[°]Deceased

Create Your Own series with two or more shows

Cinderella

Jan. 21 - Feb. 10, 2024

Aida

Mar. 9 - Apr. 7, 2024

Champion

Jan. 27 - Feb. 11, 2024

LIMITED AVAILABILITY

Mozart Requiem

Mar. 22 & 24, 2024

Create Your Own series
today and save.

lyricopera.org/cyo

Lyric
OPERA OF
CHICAGO

**Enduring,
exhilarating,
and enriching**
opera.

**Made possible
by donors
like you.**



Support Lyric Opera of Chicago
lyricopera.org/donatenow
312.827.3500

Supporting our future— endowments at Lyric

As a perpetual fund that annually distributes a designated portion of earnings and investment income, endowments provide a steady source of funding so Lyric can be a leader in the opera world—now and into the future.

LYRIC ENDOWED CHAIRS

Supports

Chorus Director
Concertmaster

Costume Designer
General Director

Lighting Director

Music Director
Production and Technical
Director⁺

Wigmaster and Makeup
Designer⁺

Ryan Opera Center Director
Ryan Opera Center
Music Director

Established by

Howard A. Stotler
Mrs. R. Robert Funderburg,
in honor of Sally Funderburg

Richard P. and Susan Kiphart
The Women's Board,
*in loving memory
of Ardis Krainik*

Mary-Louise and James S. Aagaard,
in honor of Duane Schuler

John D. and Alexandra C. Nichols
Allan and Elaine Muchin

Marlys A. Beider, *in loving
memory of Harold Beider*

The Ryan Opera Center Board
Jannotta Family

LYRIC PRODUCTION ENDOWMENT FUNDS

Supports

Baroque Operas
French Operas
German Operas
Italian Operas
Mozart Operas

Puccini Operas
Verdi Operas
Wagner Operas

Established by

Anonymous
W. James and Maxine P. Farrell
Irma Parker
NIB Foundation
Regenstein Foundation,
in honor of Ruth Regenstein

Mary Patricia Gannon
Guild Board
Anonymous

LYRIC ENDOWMENT FUNDS

Sarah and A. Watson Armour III Endowment
Shirley and Benjamin Gould Endowment
John D. and Catherine T. MacArthur Endowment
Public Engagement Endowment Fund

DISCOVER LYRIC ENDOWMENT FUNDS

The Grainger Foundation, for the NEXT program
Bruce Gober MD and Donald Ratner Endowment Fund⁺

RYAN OPERA CENTER ENDOWMENT FUNDS

Dr. C. Bekerman Endowment⁺

Thomas Doran Endowment⁺

Boyd Edmonston & Edward Warro Endowment⁺

James K. Genden and Alma Koppedraijer Endowment⁺

Bruce Gober MD and Donald Ratner Endowment Fund⁺

H. Earl and Miriam U. Hoover Endowment Fund

J. Thomas Hurvis Endowment Fund,
in memory of Richard P. Kiphart

Robert and Ellen Marks Ryan Opera Center Vocal Studies Director
Endowment, *in memory of Gianna Rolandi*

Lois B. Siegel Endowment

Joanne Silver Endowment

Drs. Joan and Russ Zajtchuk Endowment⁺

LYRIC UNLIMITED — LEARNING AND CREATIVE ENGAGEMENT ENDOWMENT FUNDS

Katherine A. Abelson Education Endowment

Dr. C. Bekerman Endowment⁺

Raynette and Ned Boshell Endowment

George F. and Linda L. Brusky Youth Education Endowment⁺

The Chapters' Education Endowment, *in memory of Alfred Glasser*

James K. Genden and Alma Koppedraijer Endowment⁺

Bruce Gober MD and Donald Ratner Endowment Fund⁺



With major support provided from the Nancy W. Knowles Student and Family Performances Fund

During her lifetime, Carol Fox Award recipient Nancy Knowles generously invested her time, talents, and leadership to advance Lyric through her membership on the Board of Directors, Executive Committee, and the Guild Board. In recognition of her extraordinary gift to the Campaign for Excellence, Lyric named the Nancy W. Knowles Lobby in 2007. Later, Nancy made a significant gift in support of the Breaking New Ground Campaign, creating the Nancy W. Knowles Student and Family Performances Fund, which she secured by including Lyric as a beneficiary of her estate—a remarkable continuation of her lifetime generosity. Lyric will forever be grateful for Nancy's extraordinary generosity and for creating a fund through her thoughtful gift planning that will support children and family programming at Lyric for years to come.

⁺**Future Planned Gift** These donors have named Lyric in their will, trust, IRA, or other planned giving possibilities to establish an endowment fund in their name to support Lyric, its programs, and positions forever. Learn how to leave a lasting legacy by contacting **Mike Biver**, Senior Director of Gift Planning, at **312.827.5655** or email **mbiver@lyricopera.org**.

“

With 100 years of Lyric attendance between us, we have indelible memories of brilliant voices, moving dramas, and stagecraft of the highest order. Because it has so enriched our lives, the future of opera matters to us. That's why we've named Lyric in our wills.

Allen Frantzen & George Paterson

PASSION... Pass it on.

The Ardis Krainik Society

To learn more about leaving a lasting legacy at Lyric, please contact **Mike Biver**, Senior Director of Gift Planning
mbiver@lyricopera.org | 312.827.5655

Lyric

ARDIS KRAINIK
SOCIETY

Gift planning at Lyric

Ardis Krainik Society at Lyric | This group consists of dedicated supporters who have designated a special gift through their will, trust, IRA, or other planned giving method to benefit Lyric into the future.

ARIA BENEFACTORS

Lyric would like to acknowledge the extraordinary philanthropy of the following individuals who have made significant legacy commitments of \$1,000,000 or more and who comprise the Aria Benefactors of the Ardis Krainik Society.

Anonymous (6)
Paul & Mary Anderson
Family Foundation
Marlys A. Beider
Dr. C. Bekerman
Ann Blickensderfer
Marion A. Cameron-Gray
Christopher Carlo & Robert Chaney
David° & Orit Carpenter
Amanda & Matthew° Fox
James K. Genden° &
Alma Koppedraier
Bruce Gober MD & Donald Ratner°
Howard Gottlieb
Sue & Melvin Gray
Dr. Petra B. Krauledat &
Dr. W. Peter Hansen
Philip G. Lumpkin
John Nigh
Julia Pernet
Kenneth Porrello & Sherry McFall
Richard O. Ryan
Diane Marie Tkach &
James F. Freundt
Virginia Tobiason
Dr. & Mrs. Peter Willson
Rabbi Larry Winer° &
JoAnne Johnson Winer
Stephen R. Winters & Don D. Curtis
Dr. Robert G. Zadylak &
James C. Kemmerer
Drs. Russ & Joan Zajтчuk
Anne Zenzer

SOCIETY MEMBERS

Anonymous (141)
Rich & Jan Aaron
Valerie & Joseph Abel
Louise Abrahams
Richard Abram & Paul Chandler
Dr. Whitney Addington
Ginny Alberts-Johnson &
Lance Johnson
Carl H. & Cynthia Albright
Judy L. Allen
Gary & Barbara Allie

Louise E. Anderson
Catherine Aranyi
L. Robert Artoe
Bert Badillo
Richard N. Bailey
David Gerard Baker
Susann Ball
Randolph & Lorraine Barba
Margaret Basch
Mr. & Mrs. Ron Beata
Mrs. Bill Beaton
Mark & Judy Bednar
Steve Beier
Martha Bell
Geraldine C. Bellanca
Daniel J. Bender
Lynn Bennett
Julie Anne Benson
Charles E. & Nancy T. Berg
Joan Israel Berger
Barbara Bermudez
Susan Bernstein
Kyle & Marge Bevers
Patrick J. Bitterman
M. J. Black & Mr. C. Lancy
Richard Blackwell
Dr. Debra Zahay Blatz
Merrill & Judy Blau
D. Jeffrey & Joan H. Blumenthal
Marlene R. Boncosky
Mr. & Mrs. John Jay Borland
Ned & Raynette Boshell
David Boyce
Dr. & Mrs. Boone Brackett
Christine & Paul Branstad
Family Foundation
Robert & Phyllis Brauer
Danolda (Dea) Brennan
Daniel A. & Leona B. Bronstein
Carol & Alan Brookes
Kathryn Y. Brown
Richard M. & Andrea J. Brown
George F° & Linda L. Brusky
Steven & Helen Buchanan
Dr. Gerald & Mrs. Linda Budzik
Lisa Bury
John E. & Alice Butler
Robert J. Callahan
Julienne Campbell
Amy & Paul Carbone
James & Penny Carper
Carla Carstens & Theodore Herr
Patrick Vincent Casali
Dinah Jacobs Castle
Esther Charbit
Jeffrey K. Chase, J.D.

Ramona Choos
J. Salvatore L. Cianciolo
Heinke Clark
Robert & Margery Coen
Eugenia Collias
Elaine Collina
Peter & Beverly Conroy
Sharon Conway
Sarah J. Cooney
Dr. W. Gene Corley Family
Joseph E. Corrigan
Paul T. & Elaine D. Cottey
Una Creditor
Barbara L. Dean
Phyllis Diamond
Roger & Linelle Dickinson
Ms. Janet E. Diehl
Mr. & Mrs. William S. Dillon
Catherine R. DiNapoli
Dr.° & Mrs. Bernard J. Dobroski
Thomas M. Dolan
Mary Louise Duhamel
Kathleen Dunn
Roma Krystyna Dybalski
Carol A. Eastman
Judy Eckberg
Boyd Edmonston & Edward Warro
Endowment Fund
Mr.° & Mrs. Don Elleman
Cherelynn A. Elliott
Peter & Kelli° Emery
Dr. James A. Eng
La & Philip Engel
Susanna & Helmut Epp
Erika E. Erich
Mr. & Mrs. James D. Ericson
Dr. & Mrs. James Ertle
Ms. Mary T. Ethier
Marilyn D. Ezri, M.D.
Martha L. Faulhaber
Dr. & Mrs. Paul Y. Feng
Nancy R. Fifield
Robert F. Finke
Felicia Finkelman
Jack M. & Marsha S. Firestone
Morris & Natalie Fisher
Eloise C. Foster
Jack B. Franaszek &
Kathleen A. McQueeney
Patricia & Maurice J.° Frank
Richard J. Franke
Ms. Susan Frankel
Thomas H. Franks, Ph.D.
Penny & John E. Freund
Marie & Gregory° Fugiel
Sheilah Purcell Garcia, Lady Witton

George & Mary Ann Gardner
Scott P. George
Margaret & Patrick Ghielmetti
Melinda E. Gibson, MD, *in memory*
of Sylvia M. Morrison
Norden S. Gilbert
John F. Gilmore
Michael Goldberger
John A. Goldstein
Mr. & Mrs. Delmon Grapes
Rick Greenman
Dr. J. Brian Greis
James R. Grimes
Patricia Grogan
Carolyn Hallman
Carl J. Halperin
Mr. Edwin Hanlon
Miss Patricia O. Hanlon
Ms. Geraldine Haracz
Mary Kathryn Hartigan
Julian W. Harvey
Andrew Hatchell
William P. Hauworth
Dr. & Mrs. David J. Hayden
Mr. & Mrs. Thomas C. Heagy
Mrs. Thomas D. Heath
Josephine E. Heindel
Allen W. Heinemann &
William Borden
Stephanie & Allen Hochfelder
Mrs. Marion Hoffman
Elizabeth Holding
Stephen D. Holmes
Edith A. Holst
Mary & Jim Houston
H. Eileen Howard &
Marshall Weinberg°
Sarah & William Hufford
Kenneth N. Hughes
Michael Huskey
Cpt. Bernardo Iorgulescu, USMC
Memorial Fund
Merle Jacob
J. Jeffrey Jaglois
Edgar D. Jannotta
Stanley J. Janowiak
Dr. & Mrs. Todd & Peggy Janus
Barbara Joabson
Diane & Alan Johnson
John Arthur Johnson
Ronald B. Johnson
Roy A. & Sarah C. Johnson
Barbara Mair Jones
Mr. Theodore Kalogeresis
Wayne S. & Lenore M. Kaplan
Kerma & John Karoly

For more information about becoming an Ardis Krainik Society member and the related levels and benefits associated, contact **Mike Biver**, Senior Director of Gift Planning, at **312.827.5655** or **mbiver@lyricopera.org**.

°Deceased

Kenneth Kelling
 Chuck & Kathy Killman
 Diana Hunt King
 R. William Klein, Jr.
 Laura & LeRoy Klemt
 J. Peter Kline
 Helen Kohr
 Edward & Adrienne Kolb
 Susan Kryl
 Barbara A. Kummerer, *in memory*
of Thomas H. Kummerer
 John C. & Carol Anderson Kunze
 Axel Kunzmann & Bruce J. Nelson
 Mary S. Kurz
 Larry Lapidus
 Barbara K. Larsen
 Angela Larson &
 Bamshad Mobasher
 Thomas & Annelise Lawson
 Henrietta Leary
 Gloria & Donald LeBoyer
 Dr. & Mrs. Andrew O. Lewicky
 Pamela Forbes Lieberman
 Mrs. Paul Lieberman
 Carole F. Liebson
 Carol L. Linne
 Candace Broecker Loftus
 Doris C. Lorz

Carolyn Lovering
 David and Bernadette Lowum
 Carlotta & Ronald Lucchesi
 Dorette PS Luke
 William & Terry Maher
 James C. & Suzette M. Mahneke
 Mr. & Mrs.° Nicholas Malatesta
 Jeanne Randall Malkin
 Ann Chassin Mallow
 Jennifer J. Malpass
 Dr.° & Mrs. Karl Lee Manders
 Allison R. Manley
 Daniel T. Manoogian
 Daniel F. Marselle
 Judy Marth
 Mrs. Elizabeth Upjohn Mason
 Dr. Christine Winter Massie &
 James Massie
 Michael P. Mayer
 Mr. & Mrs. Richard P. Mayer
 Michael M. & Diane Mazurczak
 Mrs. David McCandless
 James G. & Laura G. McCormick
 Gia & Paul McDermott
 Blythe Jaski McGarvie
 William F. McHugh
 Bill McVey
 Martina M. Mead

Mr. & Mrs. Leland V. Meader
 Bill Melamed
 Dr.° & Mrs. Jack L. Melamed
 Mr. & Mrs. Peter M. Mesrobian
 Dr. & Mrs. Joseph Meyers
 Barbara Terman Michaels
 Margaret & Craig Milkint
 Michael Miller & Sheila Naughten
 Susan M. Miller
 Mr. & Mrs. William A. Miller
 Edward S.° & Barbara L. Mills
 Martha A. Mills
 Vlasta A. "Vee" Minarich
 David & Justine K. Mintzer
 BettyAnn Mocek & Adam R. Walker
 Robert & Lois Moeller
 Dr. Virginia Saft Mond
 Drs. Bill° & Elaine Moor
 Allan & Elaine Muchin
 Julia Garrofe Munoz
 Mr. & Mrs. Michael E. Murphy
 Ms. Diana K. Myers
 Tom Myles
 David J.° & Dolores D. Nelson
 John H. Nelson
 Edward & Gayla Nieminen
 Zehava L. Noah
 Renate P. Norum

Patricia A. Noska
 Linda Moses Novak
 Margo & Michael Oberman
 Dr. & Mrs. Frederick Olson
 Virginia O'Neill
 David & Sheila Ormesher
 Jonathan Orser
 Gerald L. Padbury
 John & Dawn Palmer
 Joan L. Pantsios
 Robert W. Parsons, M.D.
 George R. Paterson &
 Allen J. Frantzen
 Donald Peck
 George Pepper, M.D.
 Sunday & Charles Perry
 Susanne P. Petersson
 Shirley Pfennig
 Genevieve M. Phelps
 Karen & Dick Pigott
 Robert M. Pine
 Louis A. Pitschmann &
 Lillian A. Clark
 John J. W. Plampin
 Drs. Alan & Carol Pohl
 Ms. Lois Polakoff
 D. Elizabeth Price
 Nathaniel W. Pusey

°Deceased



Lyric
 OPERA OF
 CHICAGO

Take your place in Lyric history

Name a seat in the Ardis Krainik Theatre

with a personalized brass plaque at the seat of your choosing.
 It's the perfect way to celebrate an event, remember
 a loved one, or simply commemorate your love of Lyric.

Learn more at lyricopera.org/nameaseat
 or call **312.827.5686**.

Todd Rosenberg

Dr. Sondra C. Rabin
 Mary Raffetto-Robins
 Roberta Lyn Anderson Rains
 Dorothy V. Ramm
 Stanley Ransom
 Linda Raschke
 Christina Rashid
 Mr. & Mrs. Keith A. Reed
 Kenneth Reid
 Michael & Susan "Holly" Reiter
 Jennie M. Righeimer
 Charles & Marilyn Rivkin
 Sylvie Romanowski
 James & Janet[°] Rosenbaum
 J. Kenneth & Susan T. Rosko
 Anthony & Chatka Ruggiero
 Joseph C. Russo
 Dennis Ryan
 Louise M. Ryssmann
 Eugene Rzym, *in memory of*
Adaline Rzym
 David Sachs
 Mary Ann Sadilek
 Suzanne & William[°] Samuels
 Mary Ann & Bob Savard
 Dr. & Mrs. Anthony J. Schaeffer
 Mary T. Schafer
 Mrs. Philip H. Schaff, Jr.
 Margaret Schermerhorn
 Douglas M. Schmidt
 Franklin Schmidt
 Martha P. Schneider
 Ms. Frances A. Schrader
 Dr. Itai Seggev
 Donald Seibert
 Curt Shaffer[°] & Margaret Orbon
 Sandra Shane-DuBow
 Amy H. Shapiro, Ph.D.
 Sherie Coren Shapiro
 Charles Chris Shaw
 Mr. & Mrs. Gordon M. Shaw
 David Shayne
 Jared Shlaes
 Larry G. Simpson
 Dr. Ira Singer
 Margles Singleton
 Thomas G. Sinkovic
 Craig Sirles
 Dennis R. & Patricia M. Smith
 Norman & Mirella Smith
 Mr. Reeves E. Smith
 Joan M. Solbeck
 Mary Soleiman
 Philip & Sylvia[°] Spertus

Ms. Gay K. Stanek
 James Staples
 Sherie B. Stein
 Michael Steinberg &
 Salme Harju Steinberg
 J. Allyson Stern
 Lisbeth Cherniack Stiffel
 Mr. & Mrs.[°] James P. Stirling
 Carol A. Stitzer & Marshall Marcus
 Clara Basch Stone
 Dr. & Mrs.[°] Peter W. Stonebraker
 Mary Stowell
 Daniel & Norene Stucka
 Mr.[°] & Mrs. Glenn L. Stuffers
 Emily J. Su
 Sherwin A. Swartz
 Mr. Charles A. Tausche
 Mr.[°] & Mrs. John C. Telander
 Cheryl Lorelle Thaxton
 L. Kristofer Thomsen
 Carla M. Thorpe
 Karen Hletko Tiersky
 Myron Tiersky
 Jacqueline Tilles
 Lawrence E. Timmins
 Mrs. William C. Tippens
 Paula Turner
 Robert & Gloria Turner
 Paul & Judith Tuszyński
 Ulmann Family Charitable
 Remainder Unitrust
 Cynthia Vahlkamp & Robert Kenyon
 Charitable Trust
 Mike & Mary Valeanu
 Marlene A. Van Skike
 Lorraine & Dave Vander Ark
 David J. Varnerin
 Nancy Johnson Vazzano
 Raita Vilnins
 Malcolm V. Vye, M.D.
 Albert Walavich
 Darcy Lynn Walker
 Gary T. Walthier
 Stephen & Karen Walton
 Albert Wang
 Barbara M. Wanke
 Louella Krueger Ward
 Karl Wechter
 Patricia M. Wees
 Claude M. Weil
 Eric Weimer
 Mr. & Mrs. Arnold Weinberg
 Joan & Marco[°] Weiss
 Joanna L. Weiss

Mrs. Robert G. Weiss
 Mrs. Melville W. Wendell
 Sandra Wenner
 Jane B. White
 Claudia Winkler
 Nora Winsberg
 Mr. David Winter
 Florence Winters
 Brien & Cathy Wloch
 Mr. & Mrs. Robert E. Wood II
 Mrs. William Wunder
 Daniel R. Zillmann

ESTATE GIFTS

The following estates have generously provided gifts of bequests and other planned gifts to Lyric. Due to space limitations, listings include only planned gifts received in the past three years and is current as of October 15, 2023. With deepest regards, Lyric commemorates and remembers those departed Lyric patrons who have honored us with these most-profound commitments.

James S. & Mary-Louise Aagaard
 Carol A. Abrioux
 Judith Anderson
 Dorothy Avedisian
 Dr. Michael O. Blackstone
 Dr. Gregory L. Boshart &
 Dr. William R. Lawrence
 Judy Bober
 Joan Brugger
 Dr. Mary Louise Hirsh Burger &
 Mr. William Burger
 Wiley Caldwell
 Irma M. Caprioli
 David Carpenter
 Henry J. Carson
 Charles Putnam Case
 Ellen Clasen
 James Compton
 Victoria Defty
 Azile Dick
 Thomas Doran
 Richard L. Eastline
 Nadine Ferguson
 Roy Fisher
 Barbara Franch
 Rhoda & Henry Frank
 Mary Patricia Gannon

Lyle Gillman
 Carolyn Hallman
 Mary Elizabeth Mako Helbert
 Elsie Heyler
 Rebecca Jarabak
 Judy Jasper
 Janet Jones
 Dr. Anne Juhasz
 Robert & Jeanne Kapoun
 Neil King
 Nancy W. Knowles
 Rosalie Loeding
 Hugo Lorenz
 Edward Mack
 Dr. Alexis W. Maier Trust
 Iris Maiter
 Bella G. Malis
 Mrs. John Jay Markham
 Robert Marks
 Nancy Lauter McDougal
 Dr. Jack Melamed
 Susan Messenger
 Gerry M. Miller
 J. Clifford Moos
 Rosemary Murgas
 Florence C. Norstrom
 Louis A. Nyman
 Irma Parker
 Dr. Frances Pietch
 Sherrie Kahn Reddick
 Mary Lee Reed
 Evelyn R. Richer
 Carol Roberts
 Jadwiga Roguska-Kyts, M.D.,
in memory of Robert Kyts
 Richard P. Schieler
 Lois Schmidt
 Caroline Seabright
 Lois B. Siegel
 Joanne Silver
 Elaine Soter
 Suzanne & Karl Stein
 Miriam Swanson
 David Thurn
 Maureen Tokar
 Mr. & Mrs. J. W. Van Gorkom
 Dorothy Vance
 Joseph & Elizabeth Walczak
 Marilee Wehman
 Caroline Wheeler
 Max & Joyce Wildman
 Bonnie Zeitlin
 Rita Zralek

For more information about becoming an Ardis Krainik Society member and the related levels and benefits associated, contact **Mike Biver**, Senior Director of Gift Planning, at **312.827.5655** or **mbiver@lyricopera.org**.

[°]Deceased

Corporate partnership

Lyric appreciates the generosity of its corporate partners.

\$1,000,000 and above



\$75,000 to \$99,999



\$500,000 to \$999,999



\$50,000 to \$74,999



\$250,000 to \$499,999



\$100,000 to \$249,999



ANONYMOUS



KIRKLAND & ELLIS



JENNER & BLOCK LLP



League of Chicago Theatres

PREMIER PATRON**\$15,000 to \$24,999**

Amsted Industries Foundation
Exelon
Wintrust Community Banks

DISTINGUISHED PATRON**\$10,000 to \$14,999**

Mayer Brown LLP

PATRON**\$5,000 to \$9,999**

Baird
BNSF Railway Foundation
Howard & Howard Attorneys PLLC
Italian Village Restaurants
Sahara Enterprises, Inc.

PARTNER**\$4,000 to \$4,999**

Sidley Austin LLP

DEVOTEE**\$3,000 to \$3,999**

American Agricultural
Insurance Company

ADVOCATE**\$2,000 to \$2,999**

Fifth Third Bank
Innis Law Group
Skadden

AFICIONADO**\$1,000 to \$1,999**

Bumper Lanes Marketing
Concierge Unlimited
International
Michuda Construction, Inc.

MATCHING GIFTS

Henry Crown And Company
Horizon Therapeutics
ITW Foundation
John D. & Catherine T.
MacArthur Foundation
JPMorgan Chase Foundation
The Pledgeling Foundation
PNC Foundation
Polk Bros. Foundation
United Way Metro Chicago
US Bank

SPECIAL THANKS

American Airlines for its
41-year partnership as the
Official Airline of Lyric Opera
of Chicago.

Willkie Farr & Gallagher and
Craig C. Martin, Chairman,
Midwest, for the firm's pro
bono legal services throughout
the year.

Warner Classics as the Official
Education and Promotion
Music Provider.

IN-KIND GIFTS

American Airlines, Inc.
Brush Creek Ranch
Coco Pazzo
Mr. & Mrs. Douglas Cohen
Crain-Maling Foundation
Dentons US LLP
Don & Anne Edwards
Fellowes, Inc.
Mr. & Mrs. Charles K. Huebner
J&L Catering
Dustin & Diana Lefebvre
Geoffrey & Laura Luce
Brendan & Suzanne Mulshine
Mr. & Mrs. William A. Osborn
Mr. & Mrs. Jerry K. Pearlman
PianoForte
The Rhapsody Theater
Patrick G. & Shirley Welsh Ryan
Mr. & Mrs. Scott Santi
Gordon & Carole Segal
Richard W. Shepro &
Lindsay E. Roberts
Shure Incorporated
Oscar Tatosian, Jr.
Carl & Marilyn Thoma

Lyric Opera of Chicago
acknowledges support from
the Illinois Arts Council
Agency.

Lyric Opera of Chicago is a
member of OPERA America.

To learn more about corporate partnership opportunities, please contact **Bryan Hulscher**,
Philanthropy Officer, Institutional Partnerships at bhulscher@lyricopera.org or **312.827.5692**.

This list includes donors whose gifts or pledges were received by November 15, 2023.

CAPITAL GIFTS

Lyric is deeply grateful to the following donors for recent capital pledges and gifts that enhance the patron experience, maintain the beauty of our landmark opera house, and enable the magic on our stage.

Irma Parker Estate

Elevator renovation project through
the Capital Improvement Initiative Fund

Anonymous

Theatre seat renovation through
the Patron Accessibility Initiative

Jack and Peggy Crowe

Glass curtain project for enhanced
climate control for patron comfort
through the Capital Improvement
Initiative Fund

Aria Society

Lyric recognizes and appreciates gifts made by generous individuals, foundations, and government organizations.

\$1,000,000 and above

AN ANONYMOUS
DONOR



Julie and Roger Baskes



Mrs. John V. Crowe



THE NEGAUNEE
FOUNDATION



Robert and Penelope Steiner
Family Foundation

\$500,000 to \$999,999

AN ANONYMOUS DONOR



The Butler Family Foundation
John & Alice Butler



The Crown Family

THE DAVEE
FOUNDATION



Gael Neeson & Stefan Edlis°



Sylvia Neil & Daniel Fischel



J. Christopher & Anne N. Reyes
Foundation



Patrick G. & Shirley Welsh Ryan



Lisbeth Stiffel

\$250,000 to \$499,999

David W. Carpenter[°] and Orit K. Carpenter, *in loving memory of David W. Carpenter*

**GRAMMA FISHER
FOUNDATION OF
MARSHALLTOWN,
IOWA**



Julius Frankel Foundation



Mr. & Mrs. Dietrich M. Gross



John R. Halligan Charitable Fund



Josef & Margot Lakonishok



Patricia A. Kenney &
Gregory J. O'Leary



Lauter McDougal Charitable Fund
Fred & Nancy McDougal[°]



Richard O. Ryan



Nancy S. Searle

**SEGAL FAMILY
FOUNDATION**



Mr.[°] & Mrs. William C. Vance
and Mrs. Herbert Vance[°]



Zell Family Foundation

[°] Deceased

\$100,000 to \$249,999

**ANONYMOUS
DONORS (4)**



Atkinson Family
Foundation



Randy L. & Melvin R.^o
Berlin



Mr. & Mrs. Allan Bulley, III



Marion A. Cameron-Gray



Amy & Paul Carbone

**JAMES &
DEBORAH
FELLOWES**



Sonia Florian



Rhoda and Henry Frank
Foundation



Ethel & William Gofen



Howard L. Gottlieb &
Barbara G. Greis



James & Brenda Grusecki



The Harris Family Foundation
Caryn & King Harris and Pam Friend Szokol



Annie & Gregory K. Jones

**JULIAN FAMILY
FOUNDATION**

**MIKE & LINDY
KEISER**



The Knowles Foundation
Nancy W. Knowles^o



Karen Z. Gray-Krehbiel
& John H. Krehbiel, Jr.



Philip G. Lumpkin

\$100,000 to \$249,999 Continued

Susan° & Robert Morrison



Allan & Elaine Muchin

**LINDA K. &
DENNIS M.
MYERS**

**NATIONAL
ENDOWMENT** for the **ARTS**
arts.gov

John D.° & Alexandra
C. NicholsMr. & Mrs. William A.
Osborn

**PENNY PRITZKER &
BRYAN TRAUBERT**



Mr. & Mrs. E. Scott Santi

**PETER
SCHEUERMANN**

Dr. Scholl Foundation
Jack & Catherine Scholl°Morris Silverman &
Lori Ann Komisar

**MARY
STOWELL**

Donna Van Eekeren
FoundationRoberta L. Washlow &
Robert J. Washlow

I've supported Lyric for over 40 years because to me it's important to stand behind any artistic endeavor that's significant in my life. Opera on stage needs to survive. It's not a given that it can or will."

Stephen F.

°Deceased

Annual individual and foundation support

VIRTUOSO CIRCLE BENEFACTOR

\$75,000 to \$99,999

Robert & Isabelle Bass
Foundation, Inc.
David Q. & Mary H. Bell
Chicago Department of
Cultural Affairs & Special
Events
Eisen Family Foundation
Mr. & Mrs.° James V. Franch
Rebecca & Lester Knight
Mazza Foundation
Jerome & Elaine Nerenberg
Foundation
Martha C. Nussbaum
The C. G. Pinnell Family
Lois B. Siegel°
Ms. Gay K. Stanek
Virginia Tobiason
Anne Zenzer & Dominick
DeLuca

MAESTRO CIRCLE BENEFACTOR

\$50,000 to \$74,999

Anonymous Donors (2)
Paul M. Angell Family
Foundation
The Brinson Foundation
Joya Caryl
The Chicago Community Trust
Nancy Dehmlow
Ann M. Drake
Amanda C. Fox
Patricia Frank
The Joyce Foundation
The Richard P. & Susan Kiphart
Family
Mr.° & Mrs. Fred A. Krehbiel, Jr.
Chauncey & Marion D.
McCormick Family
Foundation
Mr. & Mrs. Ross McKnight
Polk Bros. Foundation
Susan M. Ruder
Sage Foundation
Earl & Brenda Shapiro
Foundation
Rose L. Shure & Sidney N. Shure
Bill & Orli Staley Foundation
Gene & Jean Stark
Michael Steinberg &
Salme Harju Steinberg

Thierer Family Foundation
Cheryl A. Walczak, M.D.
Walter Family Foundation

COMPOSER CIRCLE BENEFACTOR

\$35,000 to \$49,999

Molly & Roman Boed
Greg & Mamie Case
Elizabeth F. Cheney
Foundation
Lloyd A. Fry Foundation
Virginia & Gary Gerst
Ambassador & Mrs. Ronald J.
Gidwitz
Stephen A. Kaplan
Dr. Katherine Knight
Mark & Gale Kozloff
Mr. & Mrs. Todd D. Mitchell
Frank B. Modruson &
Lynne C. Shigley
Brendan & Suzanne Mulshine
Jean McLaren & John Nitschke
Mr. & Mrs. Lee Oberlander
Betsy & Andy Rosenfield
Dr. David H. Whitney &
Dr. Juliana Chyu

ARTIST CIRCLE BENEFACTOR

\$25,000 to \$34,999

Anonymous Donors (2)
Ken & Amy Aldridge
Paul & Mary Anderson
James N.° & Laurie Bay
Diane & Michael Beemer
Mr. & Mrs. Merrill E. Blau
Fred & Phoebe Boelter
Heidi Heutel Bohn
Buehler Family Foundation
Mr. & Mrs. Andrew Butler
Cellmer/Neal Foundation Fund
Joyce E. Chelberg
Lawrence Corry
Vinay Couto & Lynn Vincent
Pamela Crutchfield
Marsha Cruzan &
Tom McGinnis
Hon. Barbara Flynn Currie
Michael Cushing
Anne Megan Davis
Cate & Jim Denny
Stephen Dunbar
Mr. & Mrs. Eugene F. Fama

David & Janet Fox
Elaine S. Frank Fund
Dr. Paul Froeschl
Mira Frohnmayer &
Sandra Sweet
Sue & Melvin Gray
Dan & Caroline Grossman
Mary Ellen Hennessy
Mr. & Mrs. Wayne J. Holman III
The Jentes Family Foundation
George Johnson
Joseph M. Kacena
Endowed Fund
Mr. & Mrs. Neil T. Kawashima
Silvia Beltrametti Krehbiel &
Jay Krehbiel
Mr. & Mrs. Jonathan B. Lewis, Sr.
Robert & Evelyn McCullen
Susan M. Miller
Music Performance Trust Fund
& Film Funds Trust Fund



It's a privilege to have such a quality organization close by so that we have been able to have live opera as a part of our life."

Wendy W.

Drs. Olufunmilayo &
Christopher Olopade
Ingrid Peters
Karen Petite
Hartley Rogers & Amy Falls
Erica L. Sandner
George Sargent
Barbara & Barre Seid
Foundation
Marsha Serlin & Jerry Sloan
Charles & M.R. Shapiro
Foundation, Inc.
Ilene & Michael Shaw
Charitable Trust
Richard W. Shepro &
Lindsay E. Roberts
Dr. Ross Slotten & Ted A. Grady
Jennifer L. Stone
Carl & Marilyn Thoma

Cherryl T. Thomas
Mr. & Mrs. James M. Trapp
Robert Turner
Cynthia Vahlkamp &
Robert Kenyon
Mr. & Mrs. Richard G. Weinberg

PREMIER PATRON \$15,000 to \$24,999

Anonymous Donors (4)
Hubert L. Allen & Hau Chyi
Ms. & Mr. Rana & Albert Baladi
Judith Barnard & Michael Fain
Ron & Margaret Beata
C. Bekerman, M.D.
Dr. & Mrs. Mark Bowen
Dr.° & Mrs. Thomas A. Broadie
Winston & Lally Brown
Rosemarie & Dean L. Buntrock
Susan Burkhardt
Ann Coleman

Sarah Crane
Susan E. Cremin & Paul Dykstra
Dan Draper
Fred L. Drucker & Hon. Rhoda
Sweeney Drucker
Drs. George & Sally Dunea
Donald & Anne Edwards
Erika Erich
Peter° & Paula Fasseas
The Ferguson-Yntema Family
Charitable Trust
Ruth Ann M. Gillis &
Michael J. McGuinnis
Lee Graber
Maria C. Green &
Oswald G. Lewis
Hinsdale Chapter
Leah & Chris Houska
James & Mary Houston

Ronald B. Johnson
Mr. & Mrs. L. D. Jorndt
Mr. & Mrs. Robert E. King
Mr. & Mrs. Keith Kizziah
Mrs. Victoria M. Kohn
MaryBeth Kretz &
Robert Baum
Dr. M. S. W. Lee
Bernard° & Averill Leviton
Laurel Appell Lipkin
Jim° & Kay Mabie
Malott Family Foundation
Jennifer Malpass
Mr. David Marshall &
Dr. Maija Freimanis
Terry & Eileen McCann
Sherry McFall &
Kenneth Porrello
Terry J. Medhurst
Martha A. Mills
Charles Morcom
The Elizabeth Morse
Charitable Trust
Chris & Eileen Murphy
Nicholas & Susan Noyes
Margo & Michael Oberman &
Family
Julian Oettinger
Sheila & David Ormesher
Marian Phelps Pawlick
Dick Pines
Rosy & Jose Luis Prado
D. Elizabeth Price
Irene D. Pritzker
Hon. S. Louis Rathje &
Maria Rosa Costanzo
The Reid-Anderson Family
Candy & Gary Ridgway
Karla Scherer
Arvin Scott
The George L. Shields
Foundation, Inc.
Louis & Nellie Sieg Fund
Craig Sirls
Dr. Cynthia V. Stauffacher
Mark Tatro &
Margarita Chavez-Tatro
James & Sara TenBroek
Dan & Patty Walsh
Mr. & Mrs. Robert E. Wood II

DISTINGUISHED PATRON
\$10,000 to \$14,999

Anonymous (8)
Alexander & Alexander,
Attorneys at Law
Mr. & Mrs. Richard Arons
Mr. & Mrs. Daniel P. Arras
Paul & Robert Barker
Foundation
Ron & Queta Bauer
Ross° & Patricia D. Bender
Mr. & Mrs. D. Theodore
Berghorst

Mr. & Mrs. Turney P. Berry
Kathleen Betterman
Cecil Booth & Danny Sharp
Mr. & Mrs. John Jay Borland
Helen Brach Foundation
John & Rosemary Brown
Family Foundation
Drs. Walter & Anne-Marie
Bruyninckx
Marie Campbell
Mr. & Ms. Douglas Cohen
Lynd W. Corley
Mrs. Marcia W. Dam
Dr. & Mrs. Tapas K. Das Gupta
Decyk Watts Charitable
Foundation
Shawn M. Donnelley &
Christopher M. Kelly
Richard & Ingrid Dubberke
Nancy & Bernard Dunkel
Mr. Paul Earle &
Ms. Ellen Rudnick
Hon. Frank Easterbrook &
Mrs. B. Englert Easterbrook
Richard Egen
Susanna & Helmut Epp
Dr. James O. Ertle
Mary & Steve Etherington
Marilyn D. Ezri, M.D.
Robert F. Finke
Mr. Steven L. Fradkin
Dr. & Mrs. James L. Franklin
Carl A. & Fern B. Gaensslen
Charitable Giving Fund
Susan Glikin
Mary & Lionel Go
Bruce Gober, MD
Judy & Bill Goldberg
Helyn D. Goldenberg
Mr. Gerald & Dr. Colette Gordon
Phillip & Norma Gordon
Chester A. Gougis &
Shelley Ochab
David & Elizabeth Graham
James R. Grimes
Daniel Groteke &
Patricia Taplick
Anders & Donna Gustafsson
Joan M. Hall
Dr. James° & Mrs. Susan
Hannigan
Joan W. Harris
King & Caryn Harris
John Hart & Carol Prins
Mr. & Mrs. Julian W. Harvey
Lynn Hauser & Neil Ross
Anne P. Hokin
Cynthia° & Ron Holmberg
John Holmes & Jenni Sorenson
Mr. & Mrs. Charles K. Huebner
Michael & Leigh Huston
Capt. Bernardo Iorgulescu,
USMC Memorial Fund
Laurie & Michael Jaffe

Dr. Carolyn & Dr. Paul Jarvis
Dr. Nora Jaskowiak & Mr.
Matthew Hinerfield
Jessen Family
*in Memory of Howard E.
Jessen & Susanne C. Jessen*
Mr. & Mrs. LeRoy C. Klemt
Edward & Adrienne Kolb
Jeanne LaDuke
Mr. Craig Lancaster &
Ms. Charlene T. Handler
Virginia Croskery Lauridsen &
Nix Lauridsen
Phillip Lehrman
Lemont Fund
Jeffrey & Elise Lennard
Dr. Zafra Lerman
Mrs. Paul Lieberman
Mr. & Mrs. Lawrence Mages
Mr. & Mrs. Robert S. &
Sandra E. Marjan
Elizabeth Upjohn Mason
Shari Mayes
Mr. & Mrs. James A. McClung
Blythe Jaski McGarvie
Phoebe McMillan



I appreciate the excellence of Lyric
performances and want to ensure that
audiences in the future will be able to
enjoy them and be enriched by them.”

Beverly C.

Andrew & Alison McNally
Dhun Mehta
Drs. Bill° & Elaine Moor
Mr.° & Mrs. Michael E. Murphy
Phyllis Neiman
Arthur C. Nielsen, Jr. Family
Charitable Trust
John Nigh
Kenneth Norgan
Mr. & Mrs. Brian &
Tammi O'Dea
Kathleen Field Orr
Cindy Pan & Eric Easterberg
Pat & Lara Pappas
Matt & Carrie Parr
Mr. & Mrs. Bruno Pasquinelli
Mr. & Mrs. Greg Pearlman
The Family of Seymour H. Persky
Harvey R. & Madeleine P.
Plonsker
Mr. & Mrs. Stephen Potter
Andra & Irwin Press
Mrs. Diana Prince
Bonnie Pritchard
Mr. & Mrs. William Revelle
Dr. Petra & Mr. Randy O. Rissman

Carol Sonnenschein Sadow
Linda Samuelson &
Joel Howell
George & Terry Rose Saunders
Curt G. Schmitt
Alan Schriesheim &
Kay Torshen
Susan Sedman
Mr. & Mrs. Richard J. L. Senior
Surendra & Dorothea Shah
Mary Beth Shea
Elizabeth S. Sheppard
Mr. & Mrs. Alejandro Silva
Adele Simmons
Ilene Simmons
Larry G. Simpson
The Siragusa Family
Foundation
Patricia Arrington Smythe
The Solti Foundation U.S.
Mark Stainton &
Virginia Simmons
James Stirling
Dr. Peter W. Stonebraker &
Denise Axtell
Mr. & Mrs. Harvey Struthers

°Deceased

PATRON

\$5,000 to \$9,999

Anonymous Donors (12)
Richard Abram &
Paul Chandler
Mr. & Mrs. Gary R. Allie
Dr. & Mrs. Robert Arensman
Norma Armon
Peter & Lucy Ascoli
Family Fund
Margaret Atherton &
Robert Schwarz
Robert S. Bartolone
Jennifer Baryl
Mark & Judy Bednar
Patrick J. Bitterman
Michael Boykins &
Charise Studesville
Mr. & Mrs. James Bramsen
Linda & Peter Bynoe
Ray Capitanini
Chapters' Executive Board
Mrs. Warren M. Choos
Dr. Young Chung Family
Thomas A. Clancy &
Dana I. Green
Heinke K. Clark
Jane B. Colman

Mrs. John M. Hartigan
Mrs. Thomas D. Heath
Mrs. O. J. Heestand, Jr.
Mrs. Richard S. Holson, Jr.
Mrs. Elizabeth S. Hough
Merle Jacob
Regina Janes
Vikram & Rachel Karnani
Judith L. Kaufman
Nancy Rita Kaz
Sarah & Kip Kelley II
Marian Kinney
Ms. Sheila Kirscher &
Mr. John Kirscher
Thomas A. Kmetko &
Rafael Leon
Dr. & Mrs. Sung-Tao Ko
Brian Kosek
Eldon & Patricia Kreider
Dr. & Mrs. Ken N. Kuo
Lake Geneva Chapter
Ms. Nataskia S. Lampe
Dustin & Diana Lefebvre
Anne & Craig Linn
Mr. & Mrs. Geoffrey W. Luce
Francine Manilow
Laura & Craig Martin
Andrew Mason

Jonathan F. Orser
Jean Perkins &
Leland Hutchinson
Laurie & Michael Petersen
Mr. Jeffry Pickus &
Ms. Mary C. Downie
Jim & Polly Pierce
Mrs. Jay Pritzker
Jennifer N. Pritzker
Alyssa & Burke Raine
Dennis C. Regan
Charles & Marilynn Rivkin
Carol Roberts
Norman Sackar
Judith Sandstrom & Peter Kohn
Ms. Inez Saunders
Judy & David Schiffman
The Schroeder Foundation
Dr. Phyllis W. Shafron &
Mr. Ethan Lathan
Dr. & Mrs. R. John Solaro
Joan M. Solbeck
Ardath & Connie Solsrud
James A. Staples
Mr. Edwin Stebbins &
Mr. Richard Stebbins
Doris F. Sternberg
Roger & Susan Stone Family
Foundation/Jennifer Stone
MinSook Suh
L. Kristofer Thomsen
Mrs. Theodore D. Tieken
Mr. & Mrs. Richard P. Toft
Robert & Alice Topping
Phil° & Paula Turner
Ksenia A. & Peter Turula
Mrs. Henry Underwood
Frances & Peter° Vandervoort
Raita Vilnins
Matthew Wald
Benjamin Wasmuth
Pam & David Waud
Dr. Catherine L. Webb
Floyd° & Judith W. Whellan
Howard S. White
Mr. Miles D. White
Mr. & Mrs. Richard Williams
Mark & Randi Woodworth
Mr. & Mrs. Michael Woolever
Owen & Linda Youngman
Priscilla T. Yu

Mr.° & Mrs. Heinz Grob
Dr. & Mrs. Todd & Peggy Janus
Jerry & Judy Johansen
Ms. Marian Klaus
Mr. & Mrs. Jerry K. Pearlman
Riverside Chapter
Saul & Sara Rosen
Jean Rothbarth
Dr. Itai Seggev &
Dr. Dara Goldman°
Bill & Harlan Shropshire

DEVOTEE

\$3,000 to \$3,999

Anonymous Donors (3)
John & Ann Amboian
Drs. Vijayalakshmi &
Bapu Arekapudi
Ms. Maribeth Babler
Margaret Baker
Mr. & Mrs. Robert D. Baldwin
Sandra M. Bass
Robert & Janice Bastian
Daniel J. Bender
Mr. & Mrs. Andrew K. Block
Michael Brazier
Ms. Sheila Burke
Cathleen Cameron
Stephen H. Carr &
Virginia McMillan Carr
Mr. Henry Clark &
Mrs. Elizabeth Simon
Penny Clevenger & Ron Jacobs
Elaine Collina
Nelson Cornelius
Mr. & Mrs. Charles G. Denison
Mr. & Mrs. Stephen Diamond
Cherelynn A. Elliott
Deane Ellis
Thomas & Jean Evans
Gregory Ferro
Marvin Fletcher
Ms. Irene M. Fox
Arthur L. Frank
George R. Paterson &
Allen J. Frantzen
Gary & Denise Gardner
Patricia H. Gates
Brent & Katie Gledhill
Jerry Goodman
Andrew Goy
Ms. Diana Guarin
Mr. & Mrs. M. Hill Hammock
Dr. & Mrs. David Jerome
Hayden
Dr. Allen W. Heinemann &
Dr. William Borden
Dr. & Mrs. Arthur L. Herbst
Stephen D. Holmes
John G. & Betty C. Jacobs
Tod Kovara
Erica Kuhlmann
Thomas Kyvig°
Marc & Franziska Lacher



Lyric Opera of Chicago constantly thrills,
with world-class productions and artists
of the highest caliber, like few other arts
organizations."

Bill K.

Francesca Cornelli
Elaine K. Cue
Gerry & Randee Curciarello
The Dancing Skies Foundation
Harry° & Marianne Dennis
Dr. & Mrs. Anthony
DiGianfilippo
Bernard J.° & Sally Dobroski
Miss Gay Elfline
Mr. & Mrs. Rick Erwin
Lafayette J. Ford
Judy Friedman
Don° & Abby Funk
John F. Gilmore
Gay L. Girolami
Mr. Jack Gorby
Mr.° & Mrs. Richard Gray
Greene Family Foundation
Glen & Claire Hackmann
The Blanny A. Hagenah
Family Fund

Mr. Donald Maves
Gerard & Kathleen Maynard
Judith W. McCue &
Howard M. McCue III
John & Etta McKenna
Sheila Medvin
Bill Melamed &
Jamey Lundblad
Dr. Walter S. Melion &
Dr. John M. Clum
Lois Melvoin
Susan & Peter Mesrobian
Ms. Britt M. Miller
David E. Miller
Mary Lou & Jack Miller
Drs. Robert & Marsha Mrtek
Ms. Cherilyn G. Murer
Mr. David Eugene Miller
David J.° & Dolores D. Nelson
Zehava L. Noah
Renate P. Norum
Mr.° & Mrs. James J. O'Connor

PARTNER

\$4,000 to \$4,999

Anonymous Donors (2)
Ms. Jane Ambler
Ms. Bernice Bigelow
John Blosser
Marit Bohbot
Ms. Joanne B. Brooks
Dr. Peter & Beverly Ann Conroy
Phillip & La Engel
Stephen & Rosamund Forrest
Annemarie H. Gramm

Pamela Forbes Lieberman
Melvin R. Loeb
Carlotta & Ronald Lucchesi
Dorette P S Luke
Bob & Doretta Marwin
Marilyn McCoy &
Charles R. Thomas
Martina M. Mead &
Michael T. Gorey
Mr. & Mrs. Craig R. Milkint
Mr. & Mrs. William A. Miller
Ms. Mary Nair
John H. Nelson
Carol M. Nigro
Penny J. Obenshain
Marjory M. Olier
Mr. & Mrs. Bruce L. Ottley
Dr. & Mrs. Alan Pohl
Edward & Leah Reicin
Alicia Reyes & Rathin Datta°
Chatka & Anthony Ruggiero
Dr. Cynthia J. Sanders
Mr. & Mrs. Michael T. Sawyer
Kenneth Sharigian
Tracy Singer
Geoffrey Smith &
Catherine Stewart
Ron Stevens
Walter & Caroline Sueske
Charitable Trust
Geraldine L. Szymanski
Oscar Tatosian, Jr.
Robert & Marilyn Trankle
Manuel S. Valderrama
Kathryn Volland-Mann &
Robert Mann
G. Marc & Tracy S. Whitehead
Mark Wilder
Claudia Winkler
F. C. Winters
Mr. & Mrs. Brien Wloch
Mr. Richard Wren
Miroslaw Zienkiewicz

ADVOCATE

\$2,000 to \$2,999

Anonymous Donor (6)
Mr. & Mrs. Richard Aaron
Bill Abromitis &
Cheryl Sandner
Mr. & Mrs. William Adams IV
Ginny Alberts-Johnson &
Lance Johnson
Mrs. Judy Allen
Evelyn Alter
Ulf G. Anvin
Angelique Montano Avina
Mr. & Mrs. Peter J. Barack
Mr. & Mrs. Larry A. Barden
Martin & Kay Barrett
Barrington & Northwest
Suburban Chapter
Barbara Barzansky
Mr. & Mrs. William E. Bible

Mrs. Arthur Billings
Mrs. John R. Blair
Dr. Debra Zahay Blatz
Ann Blickensderfer
Mr. & Mrs. Albert H. Bloom
Mrs. Fred Bosselman
Richard Boyum & Louie Chua
Daniel A. & Leona B. Bronstein
Bryan Burgett
Ms. Pamela A. Cabeen
Christopher Carlo &
Robert Chaney
Lynne Carpenter
James W. Chamberlain
Ms. Nancy J. Clawson
Jean M. Cocozza
Stevie Conlon & Sue Skau
Michael & Julie Conway
Michael Davis & Art Williams
Ms. Sarah Demet
Mr. & Mrs. John DeWolfe
Marilyn & Terry Diamond
Mr. Charles Droegge &
Ms. Julie A. Wroblewski
Kathy Dunn
Barbara & John° Eckel
Hugh & Jackie Edfors
Elizabeth Fanuzzi
Tim Feddersen
Mr. William R. Fenner
Penny & Jay Fine
Suja Finnerty
Firestone Family Foundation
Ms. Karen E. Flanagan
Mr. & Mrs. Lewis Flint
Juliana & Robert Ford
Mr. Lance Fortnow
Dr. Lucy Freund
Jef Furr
Ms. Lili Gaubin
James K. Genden° &
Alma Koppedraijer
Ms. Elisabeth O. Geraghty
Nancy S. Gerrie
Robyn Gilliom &
Richard Friedman
Lenore Glanz
Glencoe-Wilmette Chapter
Barbara & Norman° Gold
Mr. & Mrs. Stanford Goldblatt
Motoko Goto
Dr. Ruth Grant &
Dr. Howard Schwartz
Michael & Rochelle Greenfield
Dévora Grynspan & Sam Stupp
Allen & Vivian Hager
Mary E. Hallman
Mary Hampton
Robert° & Raynelle Heidrick
Robert Heitsch
Robert Hoffmann
Ms. Elizabeth Hoffman
John Hrcir
Humanist Fund
Hiromi Ishikawa

Charlene Jacobsen
Kirk, Cheryl & Hannah Jaglinski
Marilyn R. Johnson, M.D.
Drs. Perry & Elena Kamel
Wayne S. & Lenore M. Kaplan
Mr. & Mrs. Dan Kearney
Mr. & Mrs. Robert E. King
Mary Klyasheff
Frederic S. Lane
Lannan Foundation
Dr. & Mrs. Alan Leff
Mr. & Mrs. Thomas M. Leopold
Barry Lesht & Kay Schichtel
Knox & Gabrielle Long
Sherry & Mel Lopata
Craig & Jane Love
Mr. & Mrs. Ronald Martin
William Mason & Diana Davis



Each time I am at Lyric, I'm transported to another time and place. I leave with my heart and soul filled with joy and awe."

Henry M.

James McClain
Thomas J. McCormick
Ann Pickard McDermott
Claretta Meier
Helen Melchior
Charles Moore
Zac Morrison
Thomas Mulvihill
Elaine T. Newquist
Robert Nicholson
Gayla & Ed Niemin
Northfield Chapter
Janis Wellin Notz &
John K. Notz, Jr.
Eliza Olander
Irmgard & Keith Olson
Joan L. Pantsios
Mr. & Mrs. Marc Pasquale
Michael Payette
Shirley Pfenning &
Robert J. Wilczek°
Lyneta Grap Piela
John J. W. Plampin
Mrs. Charlene Posner &
Mr. Richard Posner
J. Brett & Antonia Pritchard
Dr. & Mrs. Don Randel
Roseanne Zank Rega
John Reppy
Mary Jo Rice
Ms. Enid Rieser
Mr.° & Mrs. Ronald A. Rolighed
Dr. Marsha & Dr. Robert Rosner
Susan B. Rubnitz

Mary T. Schafer
Daphne Schneider
Susan H. Schwartz
Sherie Shapiro
Mrs. Charles Shea
Mr. & Mrs. Allen Shoenberger
Cherie Shreck
Larry & Marge Sondler
Carol D. Stein & James Sterling
Scott G. & Beth F. J. Stephenson
Mr. & Mrs. Laurence Straus
Pam & Russ Strobel
Anne Taft
James Talano
Mr. & Mrs. Harold B. Tobin
Marlene A. Van Skike
Henrietta Vepstas
Dr. Annabelle Volgman

Cate & Rick Waddell
Tom & Alison Walker
Stephen & Karen Walton
Kevin & Anne Warnke
Dr. & Mrs. Dennis K. Wentz
Dr. & Mrs. Lawrence W. Wick
Robert Winn
Charles B. Wolf
David Zarefsky

AFICIONADO

\$1,000 to \$1,999

Anonymous Donors (22)
Andrew Abbott &
Susan Schlough
Karen & Herand Abcarian
Ann Acker
Frank Ackerman
Kathleen & Bruce Adamec
Marijke Adams
Susan Adler
Judith A. Akers
Giustino Albanese
Dr. & Mrs. Carl H. Albright
Mr. Charles Alcaraz &
Dr. Liana Tremmel
Carnot & Luceile Allen
Foundation
Mrs. Ronald L. Allen
Celia Althage
Ronald & Barbara Altman
Patricia Ames
Arnold Andersen
Charles° & Mary Anderson
David Anderson
Joanna Anderson

°Deceased

Doris W. Angell
 Kathleen Arthur &
 Stephen Wood
 Nunzio & Linda Badalamenti
 Rita Bakewell
 William & Marjorie Bardeen
 Leslie Barker
 Mr. & Mrs. Peter Barrett
 Ron Bauer & Michael Spencer
 Mr. & Mrs. Robert G. Baum
 Patricia Bayerlein &
 Michael Hoffman
 Priscilla & Anthony Beadell
 W. C. Beatty
 Elizabeth Beck
 Barbara Beiner
 David Beno
 Dr. Leonard & Phyllis Berlin
 Jane Berry
 Monika Betts
 Kyle & Marge Bevers
 Mr. & Mrs. John Bienko
 Chris Bingham &
 Shari Williams
 Georgia Blalock
 Elaine & Harold Blatt
 Elizabeth & David Blinderman

Margery & Robert Coen
 Dr. Frank F. Conlon
 Dr. Thomas Conner
 Cecilia Conrad &
 Llewellyn Miller
 Ms. Patricia S. Crise
 Gary Crosby
 Robert Curley
 Czarkowski Family
 Silvija & John Danielson
 Jason Dantico
 David Davidson
 Frank Davis
 Marietta Dean-Weston
 Patty Litton Delony
 Richard Demenus
 Jon W. DeMoss
 Rosanne Diamond
 Darren Diehm
 Sara Dix
 Mariclaire & Lowell Dixon
 Marcia Dobson
 Ruth & Joseph Doninger
 Mr. & Mrs. Ramsey B. Donnell
 Maureen Dooley
 Ms. Jill Dougherty
 Tom Draski

Eloise C. Foster
 Penny & John Freund
 Ms. Phyllis Funkenbusch
 Mr. & Mrs. Kenneth Gaile
 Mr. & Mrs. Dale J. Garber
 Stephen & Elizabeth Geer
 Generations Fund
 Mr. & Mrs. John E. Gepson
 Dr. Thomas & Mrs. Pat Germino
 Gregory Geuther
 Mr. & Mrs. James G. Ellis
 Gaylord & William Gieseke
 Stephen & Ruth Gieser
 Joann Gilbert-Holmes
 Mrs. Patricia Gill
 Cindy Gilmore
 Mr. & Mrs. John Ginascol
 David L. Gitomer
 Dr. Paul B. Glickman
 Mr. & Mrs. Samuel D. Golden
 Amy & Michael Gordon
 Mr. Andrew Gore
 Dr. Steven A. Gould
 Claire Grant
 Mr. & Mrs. Delmon Grapes
 Ms. Julie Griffin
 John R. Grimes
 Patricia Grogan
 Joseph Gromacki
 Joseph Guthridge
 Donald Haavind & Dee Mann
 Carl Halperin
 Mr. Stephen Ham
 Mr. Larry Hanes
 Dean P. Hansen
 Sue Hanson
 Marilyn Harder
 Clay & Claire Hardon
 Paula Harshaw
 Mr. & Mrs. Edward Hartigan
 Ms. Amy Harwood &
 Mr. Evan Harwood
 William & Jennifer Hawthorth
 Adam Hecktman
 James & Anne Heger
 Sheila Ann Hegy
 Ross & Andrea Heim
 Margreatha Hein
 Thomas W. & Helen C. Hill
 William Hinchliff
 Edward C. Hirschland
 Sandra Hoffman
 Joseph Hogan
 Jackie & James Holland
 Jim & Wanda^o Hollensteiner
 Bernard H. & Edith A. Holst
 George R. Honig, M.D. &
 Olga Weiss
 Ms. Janice L. Honigberg &
 Mr. John A. Hedges
 Larry & Ann Hossack
 Mr. & Mrs. R. Thomas Howell, Jr.
 Mr. Thomas Hudak
 Mr. & Ms. Gary Huff
 William & Sarah Hufford
 Mr. & Mrs. Peter Huizenga
 Brooke & Christopher Hurley
 Feisal Istrabadi
 Adrienne Jackiw

Mr. & Mrs. Paul A. James
 Ms. Cynthia J. Jameson
 Judy Hughes Janowiak
 Norman Jeddeloh
 Kim Jensen & Tom Elsen
 Annette Johnson
 Michael & Mary Johnson
 Mr. & Mrs. Thomas Johnston
 Dr. Sara Junya
 Michael Kalata
 Josephine Kamper
 Thomas Kasdorf
 Marshall Kavesch
 Mr. Peter Keehn
 Larry M. Keer, M.D.
 Patricia Kersey &
 Charles Erlichman
 Mr. Basil Kezios &
 Mrs. Carole L. Heiman-Kezios
 Dokyung Kim
 Mr. & Mrs. Joe King
 Carolyn & Gordon Kirk
 Frank & Alice Kleinman
 Diane F. Klotnia
 Emil J. & Marie D. Kochton
 Foundation
 Roger & Diane Koenker
 Daniel & Gloria Konczal
 William Konczyk &
 Stanley Conlon
 Ms. Constance Kozikowski
 John Krackenberger
 Stephen Kraft
 Mr. & Mrs. Robert E. Krainer
 Richard & Susan Kraut
 Richard Kron & Deborah Bekken
 Mr. & Mrs. Jordan Krugel
 George Kuebler
 Dr. Axel Kunzmann &
 Mr. Bruce J. Nelson
 Markian J. Kuzycz, MD
 Kofi Kwarteng
 Peter N. Lagges, Jr.
 Laimonis & Kristina Laimins
 Elisabeth M. Landes
 David Larsen
 Harold & Neysa Laughlin
 Laurie Lawton
 Michele Lee
 Mr. & Mrs. Young I. Lee
 Eileen Leiderman &
 Ben L. Brener
 Laurence Leive
 Michael A. Leppen
 Rose Marie Lesniak-Mendez
 Dr. & Mrs. Peter Letarte
 David Levinson & Kathy Kirn
 Randy Lewis
 Dr. Judith Lichtenstein
 Mr. James Liechty
 Vivian Liese
 Katherine Lin
 Al & Patricia Linnerud
 Lawrence Lipking
 Lloyd R. Loback
 Sharon & Henry Lorsch
 Michael LoVallo, Esq.
 Charles Lovett
 Wayne R. Lueders



Supporting Lyric is one way I can honor
 my father's memory and express my
 appreciation for the doors that were
 opened for me."

Robert L.

E. M. Bluhm
 Mr. & Mrs. Daniel L. Blumen
 D. Jeffrey & Joan H. Blumenthal
 John & Claudia Boatright
 Robert & Anne Boz
 Charitable Trust
 Dr. H. Constance Bonbrest
 Mr. & Mrs. Thaddeus M. Bond, Sr
 Patricia Booth
 Donald F. Bouseman
 Michael Bradie
 Danolda (Dea) Brennan
 Giovanna & Joseph Breu
 Dr. Gerald & Mrs. Linda Budzik
 Howard & Moira Buhse
 Dan Bujas & Mary Reyes
 Matti Bunzl & Billy Vaughn
 Ms. Bonnie Bush
 Robert J. Callahan
 Jacquelyn Campagnolo
 Walter & Nancy Carlson
 Teresa Carson
 Timothy Carwinski
 Mr. Rowland W. Chang
 Mr. Donald Clark
 Veronica Clarke
 Alfred Clementi
 Antoinette Coates

Allan Drebin
 Karen Druffel
 Mr. & Mrs. Elliott E. Dudnik
 Dr. Deirdre Dupre &
 Dr. Robert Golub
 Richard & Clementina Durkes
 Ms. Roma Dybalski
 Kathleen & Andy Ebbott
 Kimberly A. Eberlein
 Adrienne Eckerling
 Jon Ekdahl & Marcia Opp
 Marjorie Elliott
 Paula Elliott
 Bob Ellis
 Peter Emery
 Paul Epner & Janet Gans Epner
 Roberta Evans
 Suzanne Faber
 Kenneth & Margaret Finder
 Carter & Lucia Findley
 Bradley & Diane Fine
 Scott Finnegan
 Mr. & Mrs. Conrad Fischer
 Marilyn E. Fites
 Mark Fitzgerald
 Michael Flores, M.D.
 Nona Flores, Ph.D.
 Paul Fong

Lutz Family Foundation
Jill Mabley
Gary MacDougal
Mrs. Diane L. Macewicz
Jeffrey & Paula Malak
Stephen Mannasmith
Lester & Mary Jane Marriner
David J. Martin
Suzanne Maso
Bernadette & Richard Masur
Anna Mattson
Dr. & Mrs. John E. Mazuski
William & Jeanine McCole
William & Margaret McCulloch
Penny McGuire &
Richard Smith
Marie McKellar
Florence McMillan
Maryjanet McNamara
Mr. & Mrs. Leland V. Meader
Greg Meadors & Julie Griffin
John Melson
Ms. Nancy Meyerson
Mr. Joseph Michalak
Michuda Construction, Inc.
Michael Middleton
Helen Harvey Mills
Vee Minarich
David & Justine Mintzer
Patricia Mitchell
Robert & Lois Moeller
Phillip Moll
William Mond
Toni-Marie Montgomery DMA
Steven Montner & Scott Brown
Mark Moore
Lloyd Morgan
Mr. Steven Morris
John S. Mrowiec &
Dr. Karen L. Granda
Dr. John S. & Nan D. Munn
Mr. George Murphy
Thomas Myles
Teri-Ellen Rogers
Manoocher Nassery
Therry Neilsen-Steinhardt
Gilberto S. Neri Jr., M.D.
Lenz & Eva Neuhauser
Diana Newman
Mrs. Anthony A. Nichols
Nancy A. Nichols
Mr. & Mrs. Anthony Nocchiero
Edwin Norris, Jr.
William Novshek &
Lynda Thoman
Jim & Gladys Nutt
Gail O'Gorman
Mr. Michael K. Oman
Mrs. Virginia A. O'Neill
OPERA America
Ruth Orth

Richard Osgood &
Wendy Wasson
Rosemary Owens
Natalie Pace
Gerald L. Padbury
Robert & Jill Paddock
Sophie & Robert Padula
Katherine Pappas
Edmond Parker
Bohdan Pauk &
Donald Carnahan
Matthias Grosse Perdekamp
Caren Perlmutter
Lorna & Ellard Pfaelzer
William & Meg Phelan
Ms. Constance Philipps
Joseph & Golnar Phillips
Thomas & Susan Pigott
Mr. John C. Pintozzi
Dr. Joe Piszczor
Mrs. Carol Glass Pollock
Gail S. Prins & Alice S. Wisse
Joseph & Kimberly Pyle
Mr. David Quell
Susan Rabe
Mary Raffetto-Robins
Robert Lyn Anderson Rains
Dorothy V. Ramm
Jeffery Rappin
Dr. & Mrs. Pradeep Rattan
Missy Ravid
Cheryl Rayner
Ross & Mary Read
James T. & Karen C. Reid
Alicia & Myron Resnick
Robert Rhea
Dr. & Mrs. Jared Robins
Elizabeth Rochford
Robert Rogers
Matthew Roob
Burton X. & Sheli Rosenberg
Babette Rosenthal
Ron & Linda Rosenthal
Mrs. & Mr. Kay C. Rossiter
Maija Rothenberg
Barbara Ruben
Drs. Cynthia & Gary Ruoff
Robert Rush
Louise Ryssmann
Eugene W. Rzym
John Sagos
Sharon Salveter &
Stephan Meyer
Pamela Sandborg
Robert & Mary Ann Savard
Patricia Schaefer
Eric & Margaret Scheyer
Thomas Schiller
James Schindler
Mrs. Rosita M. Schloss
Nancy Schmitt
Michelle H. Schultz MD

George & Deborah Schulz
Edward and Irma Schwartz,
Michael Schwartz, Lisa
Schwartz, David Schwartz &
Marcy Miller
Mr. & Mrs. John E. Scully
Todd & Maggie Searle
Valentine & Blagovesta Seng
David Shapiro
Jane A. Shapiro
Kate Sheehan
Thomas & Pamela Sheffield
Mark & Ellen Sheppard
Thomas Shields
Ms. Shannon Shin
Carolyn M. Short



We love opera, and we mostly love Lyric,
which we want to thrive."

Rick W.

Dr. & Mrs. Kenneth Siegel
Mr. & Mrs. Thomas A.
Silberman
Margles Singleton
Arthur B. Smith, Jr. &
Tracey L. Truesdale
Barbara Smith & Timothy
Burroughs
Mr. Reeves E. Smith
Mary Meyer Smits
Sunghee Sohn
S. & Anda Sokalski
The Sondheimer Family
Charitable Foundation
Dr. & Mrs. Hugo Sonnenschein
Dr. & Mrs. Eric M. Spratford
Michael Sprinker
Charles & Joan Staples
Tessa Stark
Robert & Sandra Stein
John Steines
Dr. & Mrs. Lawrence A. Sterkin
Mr. Albert Stripes
James Stone
Christopher Straus
Charles Sullivan
Mr. & Mrs. Nathan Tarcov
Susan C. Taylor
Mr. & Mrs. Terrence Taylor
Scott Teissler
John & Catherine Terdich
Cheryl L. Thaxton
Andrew J. Thomas, M.D.
Judith B. Thomas
Thomas B. Thuerer
Myron & Karen Hletko Tiersky

Diane Tkach & James Freundt
Garin Tomaszewski
Joanne Tremulis
Laurel Tsang
Joao & Mary Ubatuba
Sharon Van Dyck
Thoung Van Ha
A & T Vavasis Philanthropic Fund
Todd & Cari Vieregge
John N. Vinci
Ms. Lidia B. Vitello
Mrs. Barbara Vlack
Mr. & Mrs. James Vlaming
Robert & Camille Von Dreele
Ms. Lucinda Wakeman
Joseph & Elizabeth Wallner

Mr. & Mrs. Ralph Walsh
Douglas & Priscilla Walter
Gary T. Walther
Louella Ward
Audrey Weaver
Louis Weber
Mr. & Mrs. James Wees
Irwin Weil
Richard & Karen Weiland
Susan & Arvin Weindruch
Tamra & Jack Weiss
Mr. & Mrs. Melville W.
Wendell
Peter J. Wender
Dr. & Mrs. Robert D. Wertz
Patricia H. & William H.
Wheeler
Kyle White & Lynne Romer
James L. Wilson &
Pamela D. Toler
Roger Wilson
Betty Winer
Christopher & Julie Wood
Robert Wright
Nancy Wulfers
Ms. Nanajan N. Yakoub &
Mr. James W. Rogge
Susan & Larry Yellen
Mr. Charles Yoder
Mr. & Mrs. William R. Yowell
Dr. Robert G. Zadylak & James
C. Kemmerer
William Ziemann
Camille J. Zientek
Jacalyn Zimmerman

*Due to space limitations, we are unable to list all of the generous donors who support Lyric Opera of Chicago.
We extend our heartfelt gratitude to each and every one who enable us to fulfill our mission.*

This list includes donors whose gifts or pledges were received by November 15, 2023.

°Deceased

Commemorative gifts

Gifts of \$1,000 and above contributed in the name of a friend, loved one, or colleague are a unique expression of thoughtfulness.

IN MEMORY OF

Barbara & Michael Albanese
From Giustino Albanese & Phat Le

Mehroo Bhote & Maureen Glassberg
From Evelyn Alter

John R. Blair
From Mrs. John R. Blair

Mary C. Campagnolo
From Jacquelyn Campagnolo

David Carpenter
From an anonymous donor, Sylvia Neil & Daniel Fischel

Anna Claire
From Patricia Mitchell

Professor James D. Compton
From an anonymous donor

Richard Covello
From Robert J. Callahan

John Dimos
From Caren Perlmutter

Lyn Corbett Fitzgerald
From Mark, Kieran, Desmond Fitzgerald

Jim Crown
From Sylvia Neil & Daniel Fischel

Jerry Frank
From Marijke Adams

Chris Goodman
From Matthew Roob

Gloria Gottlieb
from Phyllis Neiman

Deborah S. Hare
From Jennifer Baryl, Ross° & Patricia D. Bender, Greg Meadors & Julie Griffin, Mr. & Mrs. Scott Santi

Howard E. Jessen & Susanne C. Jessen
From the Jessen Family

Rowena Kelley
From Clay & Claire Hardon

William Laird Kleine-Ahlbrandt
From Sheila Ann Hegy

Audrey Klotnia
From Diane F. Klotnia

George N. Kohler
From David Curry

Jeanne Malkin
From Sylvia Neil & Daniel Fischel

Andrew J. McKenna, Sr.
From Sylvia Neil & Daniel Fischel

Hugo Melvoin
From Lois Melvoin

Susan Morrison
From Sylvia Neil & Daniel Fischel, J. Christopher & Anne N. Reyes

Michael E. Murphy
from Lisbeth Stiffel

John D. Nichols
From Sylvia Neil & Daniel Fischel

Bobby Nicholson
From Mr. James Liechty

Jim O'Connor
From Sylvia Neil & Daniel Fischel

Kateryna Kulmatycka Pauk
From Bohdan Pauk & Donald Carnahan

Sarah & Peer Pedersen
From Mr. & Mrs. James Bramsen

Ken Pigott
From Marieclaire & Lowell Dixon

Kathryn "Kay" Press
From Monika Brecht

Ronald Rolighed
From Mrs. Ronald A. Rolighed

Lee Schaenen
From the Lauter McDougal Charitable Fund

Ann Van Lente Sedman & Johanna Van Lente Vandrey
From their friends & family

Devin Shafron
From Dr. Phyllis Watkins Shafron

Deborah Sobol
From Mr. Rowland W. Chang

Ellen Foster Stirling
From the Crown Family, Shawn M. Donnelley & Christopher M. Kelly, Mr. & Mrs. Charles K. Huebner, Nancy S. Searle, Lisbeth Stiffel

William C. Vance
from Sylvia Neil & Daniel Fischel, Lisbeth Stiffel

Joseph & Elizabeth Walczak
From Cheryl Walczak

Nancy Wald
From Humanist Fund

Dr. Alan J. Ward, PhD, ABPP
From Louella Ward

Edward T. Zasadil
From Larry Simpson

Sam Zell
From Sylvia Neil & Daniel Fischel, Lisbeth Stiffel

IN HONOR OF
Julie & Roger Baskes
From Peter J. Wender

Marion Cameron-Gray
From Joann Gilbert-Holmes

Anthony Freud
From Penelope Steiner, Gael Neeson, Christopher London

Mary Galvin
From Mr. & Mrs. James G. Ellis

Caroline Huebner
From Don° & Abby Funk

Elizabeth Hurley
From Richard W. Shepro & Lindsay E. Roberts

Elizabeth Hurley, Lawrence DelPilar, & Deb Hare
From Barbara & Norman° Gold

Lori Ann Komisar & Morris Silverman
From Barbara & Norman° Gold

Steffi Masur
From Bernadette & Richard Masur

Susan Morrison
From the Robert & Penelope Steiner Family Foundation

Sylvia Morrison
From Melinda Gibson

Linda & Dennis Myers
From Pamela & Stuart Lieberman

Sylvia Neil
From Patrick G. & Shirley Welsh Ryan

Sylvia Neil & Daniel Fischel
From Nancy S. Searle

Sue Niemi
From Concierge Unlimited International, Elaine & Harold Blatt

David & Sheila Ormesher
From the Eisen Family Foundation, Sylvia Neil & Daniel Fischel, Lisbeth Stiffel

Patrick & Shirley Ryan
From the Robert & Penelope Steiner Family Foundation

Terry & Philip San Filippo
From Judith B. Thomas

Nancy Santi
From Helen Brach Foundation, Peter & Paula Fasseas

Diana & Richard Senior
From Myriam Bransfield

Jon Siner for the Ardis Krainik Society
From Diana & Neil° King

Paul Sprecher
From Cathleen Cameron

Penelope Steiner
From Greg Cameron & Greg Thompson

Liz Stiffel
From Mr. & Mrs. Charles K. Huebner

Pam Szokol
From Leslie Barker

Women's Board Members Birthdays
From Mr. & Mrs. Scott Santi

This list includes donors whose gifts or pledges were received by November 15, 2023.

°Deceased

Artistic roster

SOPRANOS

Meroë Khalia Adeeb
Michelle Bradley
Teresa Castillo
Lise Davidsen
Kathryn Henry
Alexandra Loutsion
Audra McDonald
Amber Monroe
Whitney Morrison
Lisette Oropesa
Lindsey Reynolds
Alexandria Shiner
Nina Stemme
Elisa Sunshine
Kara Shay Thomson
Tamara Wilson

MEZZO-SOPRANOS

Lucy Baker
Jamie Barton
Katherine Beck
Vasilisa Berzhanskaya
Catherine Cook
Marianne Cornetti
Katherine DeYoung
Kathleen Felty
Daryl Freedman
Margaret Lattimore
Sophia Maekawa
Ronnita Miller
Krysty Swann
Melody Wilson

CONTRALTO

Meredith Arwady

TENORS

Viktor Antipenko
Spencer Britten
Lawrence Brownlee
Bille Bruley
Ryan Capozzo
Pavel Černoch

Martin Luther Clark
Paul Groves
Alejandro Luévanos
Joshua Sanders
Richard Trey Smagur
Robert Stahley
Jack Swanson
Russell Thomas
Travon D. Walker
Robert Watson

BARITONES

Justin Austin
Kidon Choi
Alessandro Corbelli
Leroy Davis
Thomas Hall
Joshua Hopkins
Michael Kelly
Laureano Quant
Ian Rucker
Hugh Russell
Reginald Smith, Jr.

BASS-BARITONES

Alan Higgs
Christopher Humbert, Jr.
Tomasz Konieczny
Nicholas Newton
Ashraf Sewailam
Wayne Tigges

BASSES

Ron Dukes
Stefan Egerstrom
Mika Kares
Önay Köse
Wm. Clay Thompson

SPEAKING ROLES

Cruz Gonzalez-Cadel
Joy Hermalyn

SOLO DANCERS

Uria Bennett
Chase Buntrock
Sam Crouch
Carl Ponce Cubero
Ervin Dix III
Adeline "A" Else
Marian Faustino
Katy Fedrigon
Benjamin Freedman
Tanner Gloystein
Lester Gonzalez
Vernon Gooden
Derick D. Banks Gray
Marcus Hardy
Andrew Harper
Johnathan Hart
Lauryn Hayes
Kara Hunsinger
Maddy Joss
Christopher Kelley
Drew Lewis
Isaac Alan Lindy
Morgan Reed McDaniel
Olivier Medus
Mickey Nixon
Anne O'Donnell Passero
Martín Ortiz Tapia
Jude M. Perry-Evans
Ashley Rivette
Martell Ruffin
Babou Sanneh
Nick Schrier
Brian Selcik
Mathew Skorupski
Dymon Samara
Malachi Squires
Brandon Talbott
Whitney Wandland

CONDUCTORS

Andy Einhorn
Jakub Hruša
Yi-Chen Lin
Enrique Mazzola
Francesco Milioto
Speranza Scappucci

DIRECTORS

Christopher Alden
Gregory A. Fortner
Claus Guth
Laurent Pelly
Jean-Pierre Ponnelle
Christian Râth
James Robinson
Axel Weidauer
Francesca Zambello

ASSOCIATE DIRECTOR

Katrina Bachus

CHORUS DIRECTOR

Michael Black

CHOREOGRAPHERS

Camille A. Brown
Karine Girard
Jessica Lang
Teresa Rotemberg
Laura Scozzi

ASSOCIATE & ASSISTANT CHOREOGRAPHERS

Christopher Jackson
Noelle Kayser
Claudia McDonald

BALLET MISTRESSES

Noelle Kayser
August Tye

FIGHT CHOREOGRAPHERS

Chuck Coyl
Samantha Kaufman
Joshua Moaney



The American Guild of Musical Artists, AFL-CIO (AGMA), is the union that represents the singers, dancers, actors, and staging personnel at Lyric Opera of Chicago.

Lyric staff

LYRIC OPERA OF CHICAGO

Anthony Freud, OBE,

General Director, President & CEO, The Women's Board Endowed Chair

Enrique Mazzola, Music Director, The John D. and Alexandra C. Nichols Endowed Chair

Elizabeth Hurley, Deputy General Director and Chief Advancement Officer

Vincente F. Milianti, Chief Financial and Operating Officer

Matthew Ozawa, Chief Artistic Administration Officer

Afton Battle, Vice President, Lyric Unlimited and Artistic Operations

Jennifer E. Boyd, Vice President, People & Culture

Anna Mattson, Vice President, Development

Andreas Melinat, Vice President, Artistic Planning

Dan Novak, Vice President and Director, Ryan Opera Center, The Ryan Opera Center Board Endowed Chair

Will Raj, Vice President, Information Technology

Maurice Richardson, Vice President, Finance

Kate Sheehan, Vice President, Principal Gifts

Michael Smallwood, Vice President, Production and Technical Director, The Allan and Elaine Muchin Endowed Chair

OFFICE OF THE GENERAL DIRECTOR

Anthony Freud, OBE, General Director, President & CEO, The Women's Board Endowed Chair
Gregg Valentine, Executive Assistant, Office of the General Director and Music Director Administration

OFFICE OF THE DEPUTY GENERAL DIRECTOR

Elizabeth Hurley, Deputy General Director and Chief Advancement Officer

Joshua Carroll, Director of Environmental Health and Safety

ARTISTIC

Matthew Ozawa,

Chief Artistic Administration Officer
Michael Black, Chorus Director and Head of Music

Artistic Operations

Afton Battle, Vice President, Lyric Unlimited & Artistic Operations
Katharine Gunnink, Director of Company Management
Tabitha Boorsma, Artistic Operations Manager

Markie Gray, Artistic Finance Manager
Kevin Krasinski, Associate Director of Company Management
Jeffrey Jauch, Company Management Associate
Faith Hart
Jordan Thomas, Company Management Assistants

Artistic Planning

Andreas Melinat, Vice President, Artistic Planning
Cory Lippiello, CSA, Director of Artistic Programs
Evamaria Wieser, Casting Consultant

Music Administration

Stephanie Karr, Senior Director of Music Administration
Sarah Cohn, Manager, Chorus and Dancers
Kourtnea Stevenson, Manager, Orchestra and Assistant Conductors
Annika Donnen, Associate Librarian
Christine Janicki, Orchestra Personnel Manager

RYAN OPERA CENTER

Dan Novak, Vice President and Director, Ryan Opera Center, The Ryan Opera Center Board Endowed Chair
Craig Terry, Music Director, The Jannotta Family Endowed Chair
Julia Faulkner, Director of Vocal Studies
Renée Fleming, Advisor at Large
Susanna McNatt, Manager

LYRIC UNLIMITED - LEARNING & CREATIVE ENGAGEMENT

Afton Battle, Vice President, Lyric Unlimited and Artistic Operations
Jill LeCesne Potter, Senior Director, Learning Programs
Megan Elk, Engagement Producer
Elise LaBarge, Learning Programs Manager
Anthony Jones, Lyric Unlimited Coordinator

ADVANCEMENT

Elizabeth Hurley, Deputy General Director and Chief Advancement Officer

Development

Anna Mattson, Vice President, Development
Scott Podraza, Senior Director, Development
Nate Groonwald, Philanthropy Officer
Bryan Hulscher, Philanthropy Officer, Institutional Partnerships
Claire Ryan, CFRE, Director, Development Operations

Patrick Rybarczyk, Philanthropy Officer
Paul D. Sprecher, Philanthropy Officer
Sarah Sullivan, Philanthropy Officer
Kassandra Hernandez, Manager, Development Operations
Meggie Keiser, Associate Director, Donor Engagement
Tara Lenardi, Grants Manager
Leta Mumgaard, Manager, Board of Directors
Libby Hatton, Coordinator, Donor Engagement
Keith Lannon, Coordinator, Donor Services
Mason Stahl, Coordinator, Donor Services

Kate Sheehan, Vice President for

Principal Gifts
Lawrence DelPilar, Senior Director of Development, Principal Gifts
Kendria Perry-Madden, Senior Director of Development, Principal Gifts
Linda Macias, Associate Director, Principal Gifts

Mike Biver, Senior Director of Gift Planning
Jonathan P. Siner, Senior Director of the Ardis Krainik Society
Jennifer Mindrum, Associate Director of Gift Planning

Jonah Levi-Paesky, Associate, Volunteer Boards and Engagement (Guild Board, Chapters, and Lyric Young Professionals)
Sara Tye, Special Events Associate
Allison VerSteegh, Special Events Associate
Will Ellis, Coordinator, Volunteer Boards (Women's Board and Ryan Opera Center Board)
Angela Valentino, Coordinator, Boards and Events

Marketing and Communications

Brad Dunn, Interim Head of Marketing and Communications
Michael Musick, Director of Digital Marketing
Samantha Berger, Website Content Manager
Erik Dohner, Associate Director of Analytics
Amanda Reitenbach, Manager of Social Media and Content
Kitty Schwartz, Digital Marketing Manager, Fundraising
Andrew Cioffi, Digital Content Producer
Shannan Moore, Digital Marketing Associate

Tracy Galligher Young, Senior Director, Marketing and Audience Development
Brittany Gonzalez Camuy, Director of Group Sales and Partnerships
David Nutt, Director of Sales and Advertising
Tasha James, Marketing Manager, Discover Lyric Programs
Jessica Pedroza, Marketing Project Manager

Jake Fruend, Graphic Design Specialist
Hannah Cremin, Group Sales Associate
Victoria Pizzuto, Marketing Associate, Advertising & Promotions

Holly H. Gilson, Senior Director, Communications
Michael Solomon, Director of Media Relations
David Zivan, Lead Writer & Editor
Alana Guggenheim, Public Relations Manager
Janie Ragsdale, Marketing and Public Relations Coordinator

Ticketing Department / Audience Services

Susan Harrison Niemi, Senior Director of Audience Services
Laura Chalmers, Associate Director, Tessitura & Ticketing
Rosemary Walsh, Sales Manager, Customer Service & Call Center
Achilles Bezanis, VIP Ticketing Associate
Emily Brink, VIP Ticketing Coordinator

Zachary Adams
Marnie Baylouny
Riley Brown
Kathy Butera
Regina Ceragioli
Stephen Clark
Nate Clarke
Madeline Curtin
Sophia Formella
Stephanie Gubin
Wesley Jones
Maria Kluber
Laura Osterlund
Gabriel Reitemeier
Joseph Ryan
Gavyn Stich
Avery Sujkowski
Kenni Ther
Danielle Vallandigham
William Vallandigham
Celia Williams
Ticket Staff

ADMINISTRATION

Vincente F. Milianti, Chief Financial and Operating Officer

Finance

Maurice Richardson, Vice President, Finance
Whitney Bercek, Controller
Jill Dryfhout, Assistant Controller
Loi Lazcano, Senior Accountant
Jesus Castro, Accounts Payable Lead
Faye Eisenberg, Staff Accountant
Erin Johnson, Manager of Financial Planning and Analysis
Zachary Kurzenberger, Senior Financial Analyst
Idalia Andrade, Accounts Payable Associate
Angela Coleman, Accounts Payable Associate

People & Culture

Jennifer E. Boyd,

*Vice President,
People & Culture*
Stephanie Strong, *Senior
Director, People &
Culture Operations*
Dawn Cerrito, *Payroll
Director*
Linda Nguyen, *Manager,
IDEA*
Charity Franco, *People
& Culture Operations
Associate*
Shanell Reynolds, *Payroll
Associate*
Camilla Fernandez, *Talent
Management Coordinator*
Kristy Le, *Employee
Engagement Coordinator*

Information Technology

Will Raj, *Vice President,
Information Technology*
Eric Hayes, *Director of IT
Operations*
Rita Parida, *Director of Data
Services*
Bill Anderson, *Senior
Systems Administrator*
Carmen De La Rosa, *Technology Support
Specialist*
Bob Helmuth, *Systems
Administrator*
Jessica Keener, *Systems
Analyst*

Facilities

John Yelen, *Senior Director
of Facilities*
Megan St. John, *Director
of Facility Operations*

Jason Thomas, *Senior Bar
Manager*
David Jaworski
Ramon Alex Perez
Porters

John Ambrose
Max Baire III
Alyssa Bisanz
Katherine Ciesla
Kyleigh Dalkin
Bill Daukus
Jose Garcia Cisneros
Sylvia Hernandez
David Jaworski
Anne Kuntz
Ashley Manley
Rachel Martinez
Judy Parker
Katey Parry
Ramon Alex Perez
Iulia Pestrikova
Juliet Smith
Anthony Sullivan
Ben Tengowski
Felipe Valadez
Lindsey Wolfeld
*Bartenders/Barbacks
and Baristas*

Richard Berry
Nina Charlotten
Isaac Karston
Moir Swinford
Coat Check Attendants

Stefan Peters, *Maitre d'*

Patrick Dowling,
Patron Services Manager
Lena Barnard
Griffin Boyle
Joel Brown
Stephanie Bulandr
Linda Cuellar
Tim Dodd
David Jaworski
Ramon Alex Perez
Ellen Pomes
Kevin Topp
Stage Door Staff

Lena Sneed,
House Manager
Paulette Alonzi
David Barcena
Paul-Martin Bender
Dominic Bialecki
Chenise Brown
Daro Cook
Chaurita Davis
Marlene Delemore
Nathalea Espinosa
Matthew Furjanic
Griselda Garcia
Sharon Gaston
Ramona Hawkins
Anna Czechut Hoffman
Gina Jacobs
Nila Cabrejos Lau
Marlyn Love
Jacob Malkinson
Thomas Miller-Boeing
Lonnie Mitchell
Isaac Monroe
Bill Murray
Kaitlyn Nelson
Steven Pace
Iris Porrata
Eduard Pulst
Andres Ramos
Francis Reckitt
Jazmin Reynoso
John Rosenthal
Leslie Rowan
Edwina Schorn
Isabella Strazzabosco
Ursula Sturgeon
Mary Thomas
Adam Wang
Katwanya West
Ushers

Gregg Brody,
Box Office Manager
Richard Diver
Joseph Dunn
David Fitzgerald
Leigh Folta
Destiny Mack
Jessica Reinhart
Allan Waite
Laura Waters
Box Office Assistant
Treasurers

Joe Minogue,
Chief Engineer
Michael LaPorte,
Lead Engineer
Philip Casica
Anthony Fasano
Fred Libert
Brian McMahon

Bernard McNeela
Kevin O'Keefe
Thomas Setina
Engineers

TECHNICAL & PRODUCTION

Vincente F. Milianti, *Chief
Financial and Operating
Officer*

Technical

Michael Smallwood,
*Vice President,
Production and Technical
Director, The Allan and
Elaine Muchin Endowed
Chair*

April Busch, *Technical
Operations Director*
Maria DeFabo Akin,
*Production Design
Director*
Scott Wolfson, *Associate
Technical Director*
Kathryn Johnson, *Associate
Properties Director*
Chris Maravich, *Lighting
Director, The Mary-Louise
and James S. Aagaard
Lighting Director
Endowed Chair*
Benjamin McCormack,
*Assistant Technical
Director*
Julia Siple, *Technical
Finance Manager*
Sarah Riffle
Bridget Williams
*Assistant Lighting
Designers*

Joe Dockweiler,
Master Carpenter

Mike Reilly, *Head Flyman/
Automation*

Chris Barker
Robert Hull, Jr.
Chase Torringa
*Rigging/Automation
Assistants*
Mark Shanabrough,
Head Shop Carpenter

Brian Grenda,
Layout Carpenter
Drew Trusk,
Head Shop Welder
Bruce Woodruff,
Layout Welder

Dan DiBennardi,
Warehouse Coordinator
Dan Donahue
Ryan McGovern
Jeffrey Streichhirsch,
Assistant Carpenters
Anthony Bernardy
Connor Ingersoll
John Ingersoll
Rory McQuillan
Dylan O'Shea
Tyler Gil Ramos

Johnny Rivers
Luigi Trupiano
Brian Walsh
Carpenters

Anthony Coia,
Master Electrician
Soren Ersbak,
Board Operator
John Clarke, Jr.
Thomas Hull
Dan Kuh
Robert Reynolds
Assistant Electricians
Martin Childress
Jason Combs
Thomas Fernandez
Brian Hobbs
Daniel Hull
Jose Villalpando
Daniel Vuillaume
Electricians

Nick Charlan,
Head Audio Technician
Matt Eble
Asiel Simpson
Matt Swiatkowski
Audio Technicians

Charles Reilly,
Property Master
Michael McPartlin,
Properties Crew Head
Phil Marcotte,
Prop Carpenter
Bob Ladd, *Armorer*
Rachel Boultinghouse,
Upholsterer
Michael Buerger
Gordon Granger
Robert Hartge
Assistant Properties
Nicholas Gutierrez
John Kopecky
Frank McPartlin
Kevin McPartlin
Michael O'Donnell, Jr.
Vince Scola
Taylor Torringa
Properties

Brian Traynor,
Charge Artist
Michael Besancon
Michael Murtaugh
Scenic Artists

Kim Buetzow, *Costume
Director, The Richard
P. and Susan Kiphart
Endowed Chair*

Lucy Lindquist,
Wardrobe Mistress

Katelynn Barker
Louie Barrios
Alice Broughton
Lauren Crotty
Ellouise Davis
Nina Escobedo
Molly Herman
Samantha Holmes
Mary Keefe
Cecylia Kinder
Krystina Lowe
Bryan McDonald
Kathy Rubel
Herbie Ruiz
Joanna Rzepka
Sarah Santiago
Dulce Santillán

Marguerite Scott
Ewa Szylak
Michelle Tan
Isaac B. Turner
Laura Whitlock
Maggie Zabierowski
Wardrobe Staff
Samantha Holmes,
Wardrobe Crew Head
Jane Blank
Brigid Brown
Anthony Bryan
Lauren Crotty
Dawn-Marie Hamilton
David Hough
Paul Ludick
Wendy McCay
Dulce Santillán
Christopher Valente
Roger Weir
Dressers

Sarah Hatten, *Wigmaster
and Makeup Designer,
The Marlys A. Beider
Endowed Chair*
Allison Burkholder,
Department Coordinator

James Ogle, *Wig and
Makeup Crew Foreman*

Necole Bluhm
Katrina Brown
Davis Campbell
Martha Contreras
Krista D'Agostino
Eric Daniels
June Gearon
Ansley Hughes
Chantelle Johnson
Lynn Koroulis
John Metzner
Claire Moores
Olivia Roach
Alice Salazar
Emily Santiago
Rachel Stiles
Pat Tomlinson
Franziska Valus
Emily Young
*Wig and Makeup
Department*

Production

Rachel A. Tobias, *Production
Stage Manager*

Katrina Bachus
Jordan Lee Braun
Alison Pogorelc
Assistant Stage Directors

Alaina Bartkowiak
Sandra Moore
Stage Managers

Katrina Bachus
Adrienne Bader
Alaina Bartkowiak
Alycia Martin
Sandra Moore
Daniel Sokalski
Peggy Stenger
Amy C. Thompson
Bill Walters
Assistant Stage Managers

To keep opera a must-see, must-hear experience, the art form needs outstanding artists who can convey through singing and acting the emotional range and engaging storytelling that are opera's hallmarks. Lyric, through The Patrick G. and Shirley W. Ryan Opera Center, identifies exceptionally talented emerging artists from around the world and provides them with comprehensive training and performance opportunities. On the world's stages, the Center's impressive roster of alumni continually proves the value of training at Lyric.



Back L-R: Ryan Capozzo, Ian Rucker, Lucy Baker, Ron Dukes, Travon D. Walker, Christopher Humbert, Jr., Donald Lee III, Michael Banwarth, Alejandro Luévano
Front L-R: Sophia Maekawa, Laureano Quant, Kathryn Henry, Lindsey Reynolds, Tess Naval, Wm. Clay Thompson, Luther H. Lewis III

Lyric

Ryan Opera Center

The 2023/24 Ryan Opera Center Ensemble

Sopranos

Kathryn Henry
Lindsey Reynolds

Mezzo-sopranos

Lucy Baker
Sophia Maekawa

Tenors

Ryan Capozzo
Alejandro Luévanos
Travon D. Walker

Baritones

Laureano Quant
Ian Rucker

Bass-baritone

Christopher Humbert, Jr.

Basses

Ron Dukes
Wm. Clay Thompson

Conductor/Pianist

Donald Lee III

Pianist

Michael Banwarth

Stage Director

Luther H. Lewis III

Stage Manager

Tess Naval

Ryan Opera Center alumni around the world

KATHERINE BECK (2020-2022)

Appearances this season: Elizabeth Lavenza/*Frankenstein*, Arizona Opera (world premiere); Lola/*Cavalleria rusticana*, Saint Louis Symphony Orchestra.

"I am so grateful to have been a part of the Ryan Opera Center. It was a truly ideal experience for me. We were expected to work hard and show our best, and, in turn, we were given incredible support and respect. I was inspired by the way the team pushed me to take risks and show my true self, and I have carried those skills and lessons with me as I entered the profession. I found a family here in Chicago, and I feel incredibly blessed to be a part of it."



Katherine Beck performed at the 2021 *Rising Stars in Concert*.

THIS SEASON



**Lunga Eric Hallam
(2020-2023)**
Il barbiere di Siviglia
Pittsburgh Opera



**Annie Rosen
(2015-2017)**
Das Rheingold
Dallas Symphony
Orchestra



**Matthew Polenzani
(1995-1997)**
Medea
Canadian Opera
Company (Toronto)

PROGRAM STAFF

Administration

Dan Novak
Director, The Ryan Opera Center
Board Endowed Chair

Craig Terry
Music Director,
The Jannotta Family
Endowed Chair

Julia Faulkner
Director of Vocal Studies

Renée Fleming
Advisor at Large

Susanna McNatt
Manager

Annika Donnen
Associate Librarian

Faculty

Julia Faulkner
Vocal Instruction,
Robert and Ellen Marks Ryan
Opera Center Vocal Studies
Program Endowment

Deborah Birnbaum
Lawrence Brownlee
Sir Andrew Davis
Renée Fleming
Enrique Mazzola
Gerald Martin Moore
Guest Master Artists

William C. Billingham
Alan Darling
Brent Funderburk
Laurann Gilley
Noah Lindquist
Celeste Rue
Eric Weimer
Coaching Staff

Isabelle Druc
Julia Savoie Klein
Derek Matson
Klára Moldová
Alessandra Visconti
Foreign Language Instruction

Nicola Bowie
Leila Gorstein
Sayjal Joshi
Katie Klein
Peter McClintock
Nick Sandys
Acting and Movement
Instruction

Orit Carpenter
Beth Clayton
Performance Psychology

Katrina Bachus
Rachel A. Tobias
Production Mentors

Artistic/Production Personnel

Louis Lohraseb
Stefano Sarzani
Conductors

Katherine M. Carter
Patricia Racette
Directors

Rachel Garoon
Stage Manager

Lyric

OPERA OF
CHICAGO

Spark inspiration.
Fuel creativity.
Ignite the stage.



Support Lyric Opera of Chicago
lyricopera.org/donatenow
312.827.3500

PHOTO: TODD ROSENBERG/LYRIC OPERA OF CHICAGO

Beyond the stage, and beyond the boundaries that often define opera companies, Lyric is igniting creativity across Chicago. Through innovative learning opportunities, creative exploration, and artistic creation and collaboration, Lyric, with your support, encourages students, educators, families, audiences, and Chicagoans from neighborhoods across the city to share their voices and embrace the power and relevance of opera as a catalyst for growth and change.



Jaelyn Simpson Photography

Teaching artist Paige Dirkes-Jacks working with students at Solomon Elementary during an Elementary Opera Residency session.

Lyric

Beyond the stage

Good Grades

Lyric's Elementary Opera Residency program brings the art form to life in unexpected places

By Graham Meyer

The scene: In a garden behind a Chicago elementary school, a fifth-grader is doing bicep curls. Another kid enters, yelling, "That's it, Curtis! We're done! I'm not your girlfriend anymore!" An ensemble of kids then fills the courtyard stage to sing, "I can buy myself flowers / Write my name in the sand."

It's a brand-new, one-time-only operatic version of *Seedfolks*, a book by Paul Fleischman about a diverse neighborhood working together to build a community garden. A class at Solomon Elementary School in the city's North Park neighborhood put the show together through Lyric's Elementary Opera Residency, a program pairing classes of first- through fifth-graders with teaching artists, to guide the students in the creation

and performance of original shows. The program, an initiative of Lyric Unlimited, the company's Learning and Creative Engagement department, opens up the art form of opera to the kids, who otherwise might not have much exposure to it—and provides them a space to cultivate creative ideas together and step out as performers.

Paige Dirkes-Jacks is a teaching artist with Lyric. A recent graduate of Northwestern University with a vocal performance degree, Dirkes-Jacks has also directed storefront opera projects such as *La Femme Bohème*, an all-female/nonbinary version of the Puccini classic put on by Ouroboros Opera and The Valkyrie Ensemble. In the Elementary Opera Residency program, she has shepherded five different classrooms through casting and staging ideas,



Dirkes-Jacks confers with a student performer during a visit as part of Lyric's Elementary Opera Residency Program.

Jaclyn Simpson Photography

**Teacher Jeanne Bakula
with fifth grade students
at Solomon Elementary.**

writing a libretto, and selecting music for their original productions, and she has several more still to come this year. Each residency consists of 13 or 18 weekly visits, the second-to-last of which is the performance, with parents, caregivers, and other students as the audience. The final meeting provides an opportunity for reflection.

Seedfolks, a book with an episodic narrative and plenty of characters to accommodate a whole class of children, was the first Lyric residency project in Jeanne Bakula's fifth-grade classroom. This year, Bakula's class is adapting *The Phantom Tollbooth*, the fantastical 1961 novel by Norton Juster, full of wordplay and ticklish pseudo-logic. They might even create their own new scenes in the style of *The Phantom Tollbooth*, if they feel inspired to. "It's a book that lends itself really well to devising," Dirkes-Jacks says.

Bakula's current fifth-graders, who attended the *Seedfolks* performance as fourth-graders, are brimming with ideas for the show, such as how to stage the tiny, listless people called the Lethargians, and who will get to build the main character's car. The students don't all have copies of the book, so they are listening to a read-aloud version with the text and illustrations projected in the classroom. "If you could see them all huddled around the screen to read the book, and counting down the minutes until they get to see Paige again," Bakula says.

Each project's music befits the source material. For *Seedfolks*, a contemporary story, Dirkes-Jacks and the students chose pop music of recent vintage, like the Miley Cyrus song "Flowers" for the dramatic breakup moment. They plan a mixture for *The Phantom Tollbooth*, maybe some pop, maybe some folk songs, and maybe an adaptation of "Rock-a-bye Baby" with lyrics rewritten for when the Lethargians fall asleep.


"My goal is to come into a school and bring opera to an accessible level, because all opera is storytelling through music, and that's for everyone," Dirkes-Jacks says. Opera, in people's minds, is freighted with all kinds of preconceptions; seeing Dirkes-Jacks, one of Bakula's colleagues at Solomon couldn't believe she was really



Jaclyn Simpson Photography

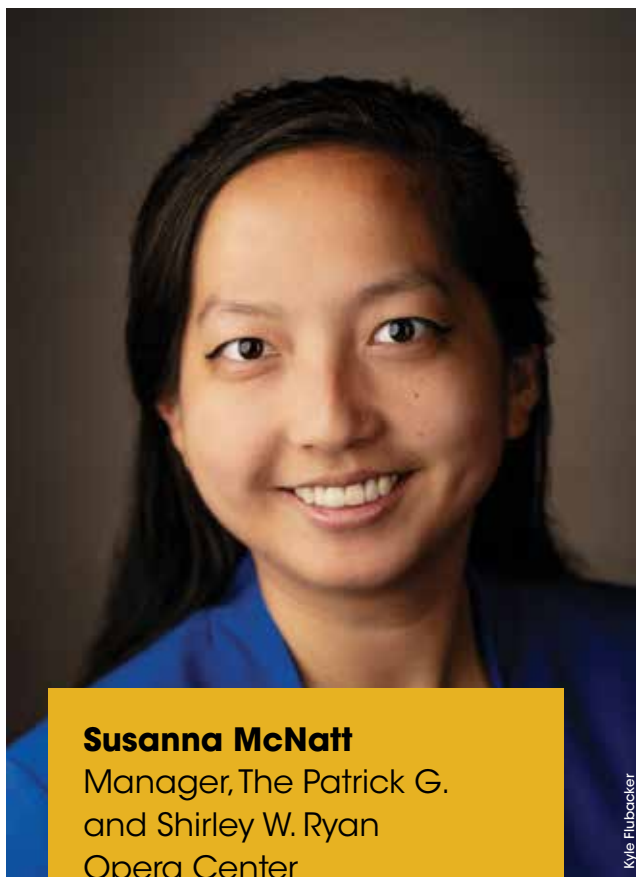
an opera singer, walking around with no breastplate or Viking helmet. "I swear he thought she would have those braids," Bakula says.

"We have a lot of assumptions about what opera has to look like and sound like and be," Dirkes-Jacks says, "and those assumptions come from very real places and very real exclusions that have happened for hundreds of years." Inclusion and even unusual locations can combat those assumptions at both the individual and community levels. One recent immigrant student, very shy, felt moved to sing a Russian song after Dirkes-Jacks sang "Voi che sapete" from *The Marriage of Figaro* for the class. Another child with troubles, often a source of tension in the school, found a moment of remove just noodling on the keyboard from time to time during rehearsals.

Dirkes-Jacks says that part of the message is to show entire communities that they, too, can participate in this art form—that opera entails less pomp than they might think. "It doesn't have to happen in a giant hall with red velvet curtains and ushers and golden chandeliers," she says. "It can happen in a community garden. It can happen in a gymnasium. It can happen in a classroom. And it's still opera, and it's still powerful." 

People of Lyric

A behind-the-scenes conversation



Kyle Flubacker

Susanna McNatt

Manager, The Patrick G. and Shirley W. Ryan Opera Center

Hometown: Westchester, NY

When did you start at Lyric?

I started September 2021, just in time for our Ryan Opera Center Final Auditions.

Favorite opera: I'd have to say *Cavalleria rusticana*. I could listen to Mascagni's soaring score on repeat!

Favorite opera character: I love Cenerentola's optimism and positive outlook on life.

Favorite performer: Brandi Carlile has the whole package. She is an outstanding vocalist and songwriter, and her stage presence is just incomparable.

What is your role here at Lyric?

The Ryan Opera Center is one of the country's preeminent emerging artist programs, and as Manager I make sure that everything goes smoothly behind the scenes. I manage the schedules for our Ensemble, and also act as a liaison with all of Lyric's different departments. I believe that I am doing my job successfully if the artists don't have to stress about anything.

What was your path to working at Lyric?

I've loved going to plays and musicals since I was young. After seeing my first live opera at the Metropolitan Opera, I told my mom, "I NEED to work here." It was just an overwhelming, new feeling. I started as a volunteer in the Archives Department and was able to make connections, immerse myself in the back of house functions, and interact with a lot of the singers. I was then an intern with Columbia Artists in their Opera Vocal Division. Once the arts re-emerged after the pandemic, the opportunity to work at Lyric landed in my lap, and I'm so fortunate to be here!

What is the most exciting aspect of your role at Lyric?

Being surrounded by music and live performances all the time! At the Ryan Opera Center we provide the artists with the tools they need to progress in their field, so it's always great to see their development and ultimate success. It brightens my day when artists pop into my office to say, "Susanna, I just had the best coaching!" I get very excited when I see the artists happy and achieving their goals!

What is something about your job that would surprise people?

That the bond we form with the artists is so strong. Our relationship doesn't end after the artists leave our program. We follow up with the artists and their achievements; we're always still talking with them. We care about them as individuals. While my job might be nine-to-five on paper, it's really a lifestyle.

What do you like about working in the arts?

I love coming to a job where everyone has the same passion that I do. So many people rely on the arts to feed their soul, and it's really rewarding to be part of producing that for the public. Opera is there when emotions can no longer be expressed through spoken words. Whether you're sad, or elated, or anxious, there is an opera that you can go to to help process those emotions. I literally can't go a day without music, so working in the arts is a dream!

Any Lyric production you are particularly proud of?

The first that comes to mind is last season's production of *Carmen*. Carmen herself was a Ryan Opera Center alumna, J'Nai Bridges, and the production featured most of our current artists on stage, too. It was really special, and I went to quite a number of those performances to cheer them all on!

Beyond opera, what are your other passions?

I love attending live music concerts, performing comedy around the city, crocheting, and playing with my bunny, Lottie. 